



PROJECT HIGHLIGHT

BLOOM APARTMENTS





BLOOM APARTMENTS

213 Princes Highway,
ARNCLIFFE, NSW

Facade Fabricator

Windtech Facade Solutions

Products Used

VENTUS | Louvre Galleries

Natural ventilation and weather protection

DS920 | Waikato Sliding Patio Door Lock

Industry benchmark for aesthetic appeal, corrosion resistance and reliability

DN197 | Entrance Handles

Durable and architectural aesthetics for commercial applications



NEW BLOOM APARTMENTS FITTED OUT WITH DORIC LOCKS AND LOUVRES

The Bloom Apartment complex in Arncliffe is a recently completed suite of urban dwellings, located in Sydney's south.

Windtech Facade Solutions were engaged to supply the doors, windows and selected hardware components from Doric's extensive hardware range.

Martin Hewett, Doric's Product Manager explained that this project showcased two of Doric's key product offerings, the DS920 Waikato Sliding Patio Door Lock and the Ventus Louvres Galleries.

Louvres are a popular choice for climate control, creating a comfortable environment due to their ventilation capabilities and functionality. In this case they were also chosen for their aesthetic that matched the contemporary look and feel of the project.



Louvres are a popular choice for climate control, creating a comfortable environment due to their ventilation capabilities and functionality.





Windtech's Senior Project Manager, Kevin Ford adds, "the Ventus Louvre Galleries system really complemented the framing system and featured beautiful handles with robust components, making the louvres easy to use.

The doors installed incorporate commercial framing and low energy glass. The Doric Waikato Sliding Patio Door Locks have an ergonomic handle coupled to industry standard machining details. As Kevin put it, "they're a pretty simple lock to install, they look good, and they fit our sliding door system really well!"

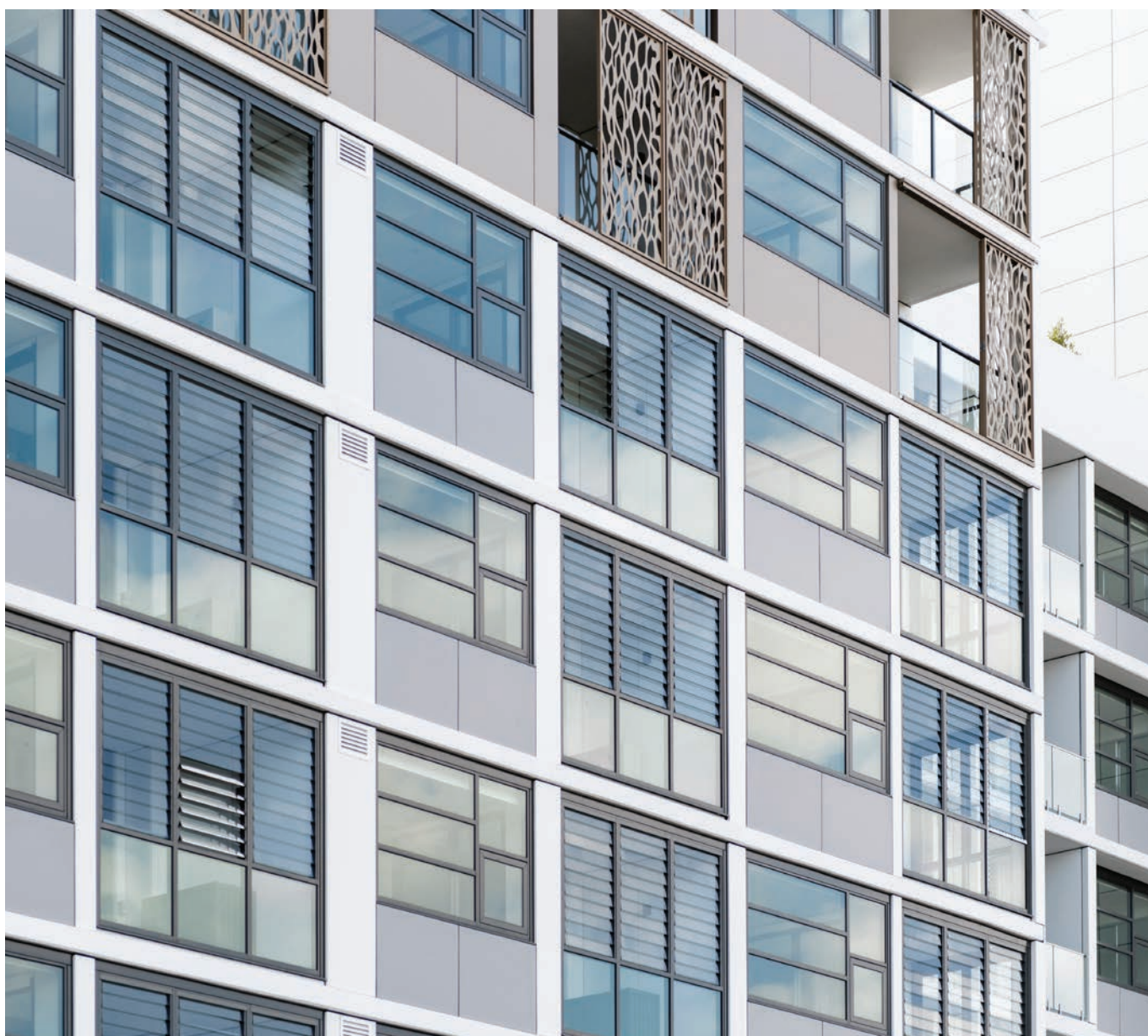
Ultimately, Windtech was attracted to the ease of working with Doric on this and other projects.



Martin explains being a local manufacturer in the Sydney area, Doric were able to make everything to order, create unit lock kits that included the lock and key and have them delivered to site in a staged floor by floor capacity. This complemented each stage of the construction process, plus, Doric's 'one key system' meant each individual unit in the complex only had one key for all locks.

As a supply partner, Doric also supplied the louvres in what they call 'window kit form'. Every opening was labelled corresponding with the unit and window numbers and location.

"This made it simple for the installers, they didn't have to double check the paperwork because everything was labelled and laid out nicely for them, which ultimately saved them time and money on the installation." explains Martin.



As an example, the glass for the louvres was cut to size, delivered in packs with paperwork that tied back to the window schedule.

“So, for any particular floor or unit, you could check the sheet, cross reference it, take it to the opening and install the glass. This extra detail reflects my dealings with Doric, they have been really good and supportive,” says Kevin.

Ease of installation is a significant contributor and cost saving. Doric's Retrofit System means all aluminum profiles and components that go into an opening, are custom built to the correct sizes. For the installer, this means you can install the system easily into the openings.

“ This made it simple for the installers, they didn't have to double check the paperwork because everything was labelled and laid out ”





SYDNEY

38 Redfern St,
Wetherill Park
Sydney, NSW 2164
Australia
Ph: +61 2 9609 2555
www.doric.com.au

AUCKLAND

26/C Triton Drive,
Albany, North Shore,
Auckland 0632
New Zealand
Ph: +64 9 415 5535
www.doric.co.nz

KUALA LUMPUR

No.17 Jalan 51/203A,
Kawasan Perindustrian Tiong Nam,
Seksyen 51, 46050 Petaling Jaya,
Selangor, Malaysia
Ph: +603 777 33 628
www.doric.com.my



BLOOM APARTMENTS