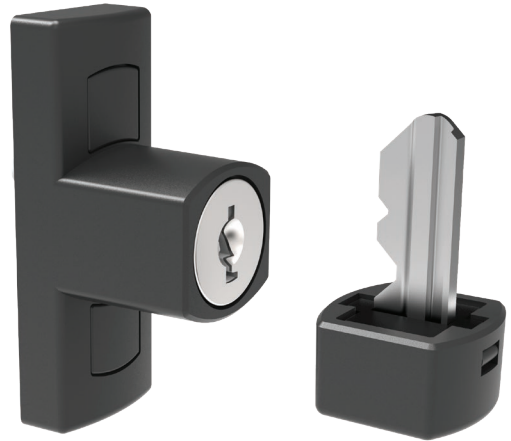




LOUVRE LOC



The Ventus Louvre Loc offers a convenient, easy to use method in securing your louvres when in the closed position.

It works just like a window, the Louvre Loc lets you close then lock the louvres for security and peace of mind. Louvre Loc is available for 152mm Series & 102mm Series of Ventus Louvre Systems.

Designed in Australia by Doric, the Louvre Loc fits within the existing Ventus louvre system without any modifications other than drilling the channel for mounting the lock.

ADVANTAGES



Easy to use - a simple turn of the snib key secures the louvres when shut.



Removable Snib - Unique Australian design turns the snib lock into a removable key for added security.



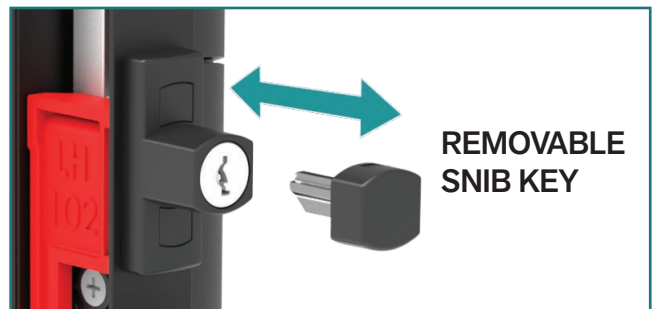
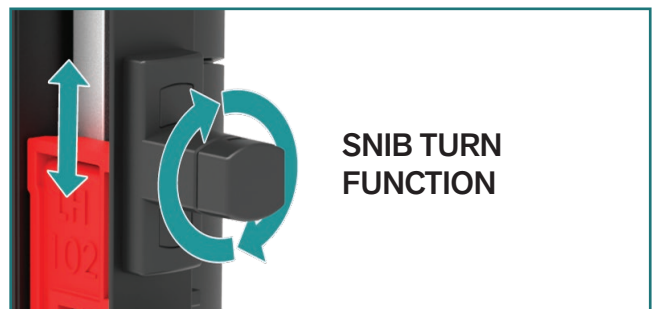
Key Compatibility - Operates with Snib Key or Doric C4 key profile.



Smart innovative design - An Australian design lead by Dorics R&D team assuring the highest quality and standards.



Colour matched to channels - when ordered together with louvre galleries.



COLOUR OPTIONS



Black



Silver



White



Monument

VENTUS | LOUVRE LOC

102mm SERIES LOUVRE LOC

For the 102mm Series Louvre the Louvre Loc is fitted above the handle. When engaged, the locking arm slides down to obstruct and lock the handle.



COMPATIBLE HANDLES:

- Standard
- Low Profile



GALLERY CLOSED
LOCKED POSITION
SNIB KEY IN



GALLERY CLOSED
UNLOCKED POSITION
SNIB KEY OUT



GALLERY OPEN
UNLOCKED POSITION
SNIB KEY IN

152mm SERIES LOUVRE LOC

The 152mm Series Louvre, the Louvre Lock is located below the louvre handle, operating the red locking arm inside the channel that slides up to obstruct and lock the handle in place.



COMPATIBLE HANDLES:

- Standard
- Ring Pull
- Low Profile
- Dual Handle



GALLERY CLOSED
LOCKED POSITION
SNIB KEY IN



GALLERY CLOSED
UNLOCKED POSITION
SNIB KEY OUT



GALLERY OPEN
UNLOCKED POSITION
SNIB KEY IN



102mm Installation Video:
YouTube:
102 Louvre Loc Overview & Installation



152mm Installation Video:
YouTube:
152 Louvre Loc Overview & Installation

INNOVATORS

OF HARDWARE FOR WINDOWS AND DOORS

VENTUS_LOUVRE_LOC_2022 v1.5 - 21.03.2022

SYDNEY

38 Redfern St,
Wetherill Park
Sydney, NSW 2164
Australia
Ph: +61 2 9609 2555
www.doric.com.au

AUCKLAND

26/C Triton Drive,
Albany, North Shore,
Auckland 0632
New Zealand
Ph: +64 9 415 5535
www.doric.co.nz

KUALA LUMPUR

No.17 Jalan 51/203A,
Kawasan Perindustrian Tiong Nam,
Seksyen 51, 46050 Petaling Jaya,
Selangor, Malaysia
Ph: +603 777 33 628
www.doric.com.my



**ALCHIN
LONG
GROUP**



LOUVRE LOC