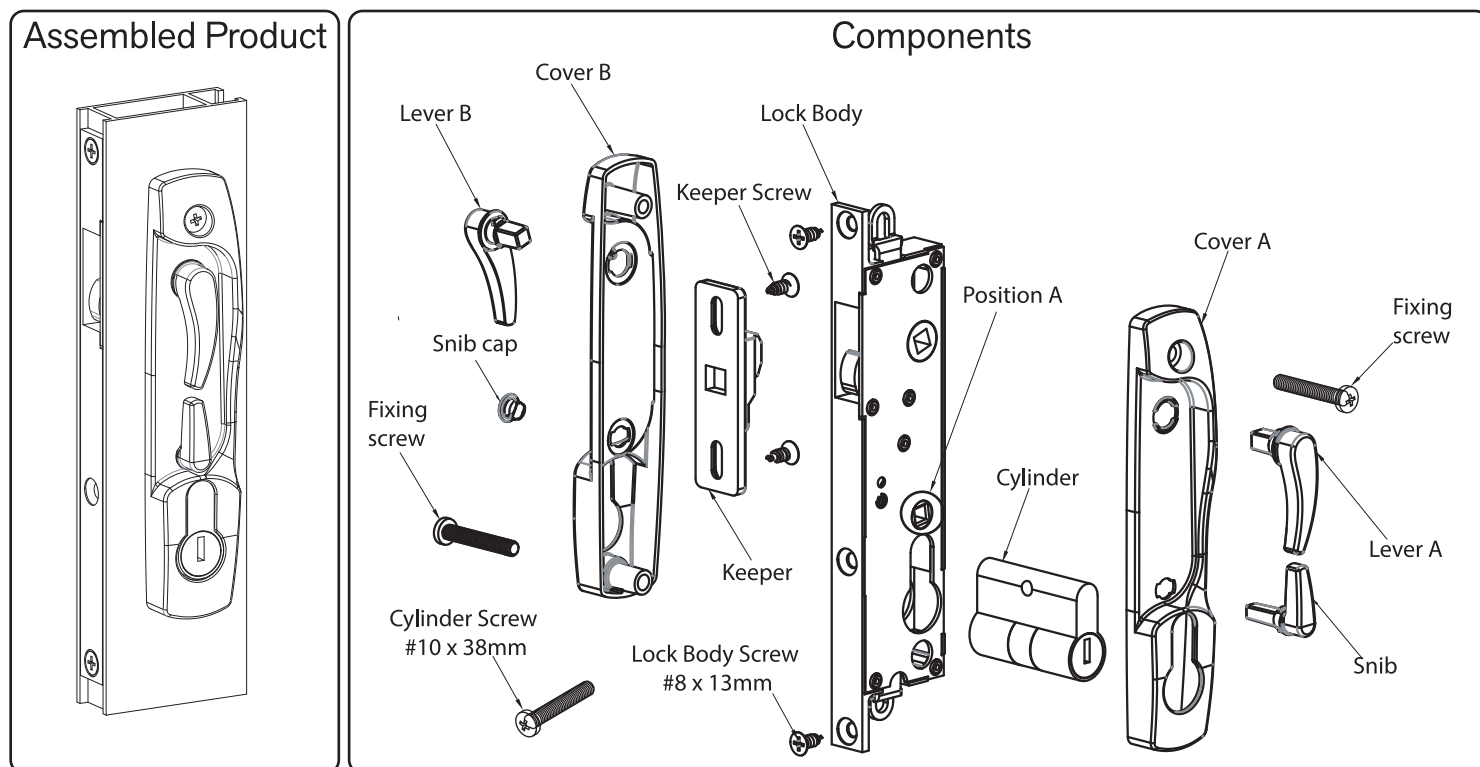


DS2210 Sliding Screen Door Lock Installation Instructions



1. Insert the lock body into the door cutout & secure it with the two #8 x 13mm lock body screws
2. Insert snib into position A and turn snib into deadlock. Then remove snib.
3. Insert the cylinder into the lock body. Using the key turn the key firmly towards the lock position to engage the cam into place.
4. With the cylinder in the locked position insert the #10 x 38mm cylinder screw and tighten.
5. Select the interior handle assembly (ie. Cover, Lever & Snib) depending on direction the door is travelling. Fit the snib into the snib hole horizontally and then turn to secure into a vertical position. Fit the lever into the lever hole horizontally and then turn to secure into a vertical position.
6. Select the exterior assembly (Cover, Lever, Snib cap) push the snib cap into the snib hole of the exterior cover. Fit the lever into the lever hole horizontally and then turn to secure into a vertical position.
7. Fit the interior and exterior handle assemblies by aligning them into the hole cut-outs. Ensure you guide the lever and snib square drives into the lock body.
8. Once the exterior & interior cover is loosely assembled on the lock body fit the two #8 x 32mm cover fixing screws. Check to see if lock is working using the key. If lock is working tighten screws.
9. Fit the strike plate into the lock. Close the door until the strike plate reaches the receiving channel. Mark the position of the strike plate with the #10x 13mm screws. Place the screws in the centre of the slots to allow for adjustment. Test that the strike plate engages the lock correctly and adjust if necessary.

Head Office: 160 Newton Rd, Wetherill Park, NSW 2164

Ph: +61 9609 2555 | Fax: +61 9604 2910 | www.doric.com.au

ABN 68 000 577 195