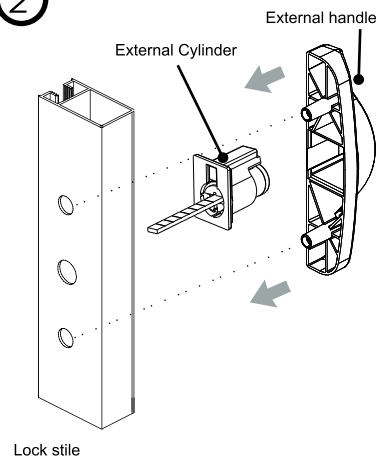
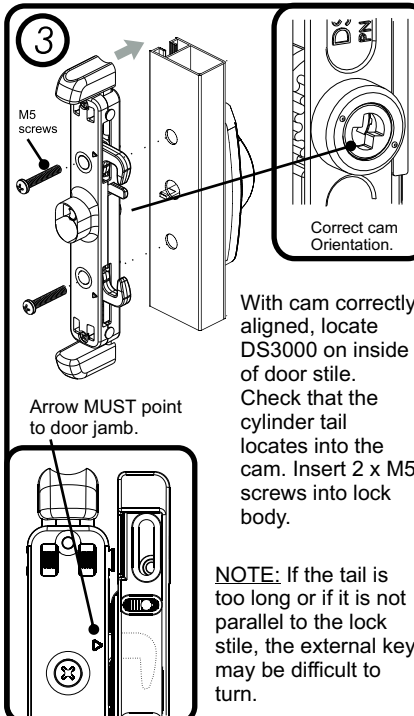


2

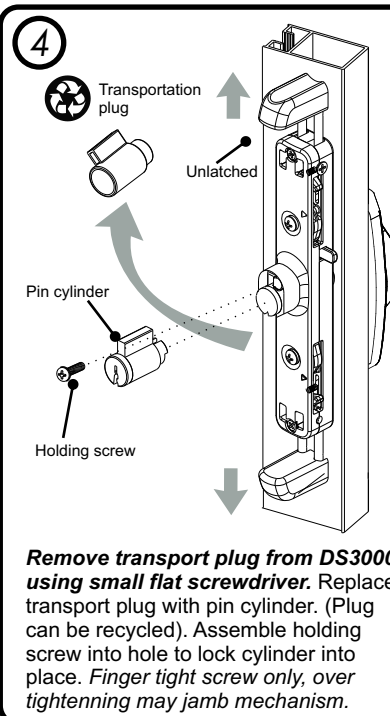


Place the external handle & cylinder on the door stile so that the cylinder tail protrudes through the centre hole.

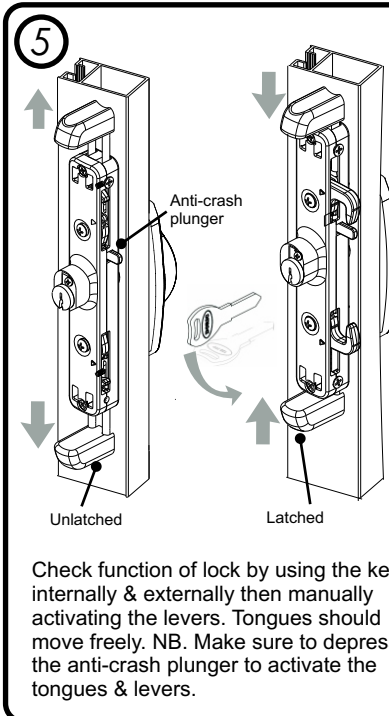
3



4

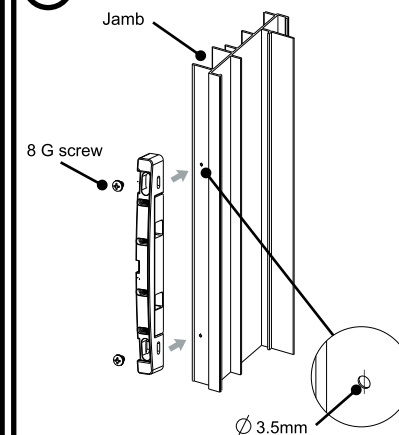


5



6

Standard Fixing of Strike



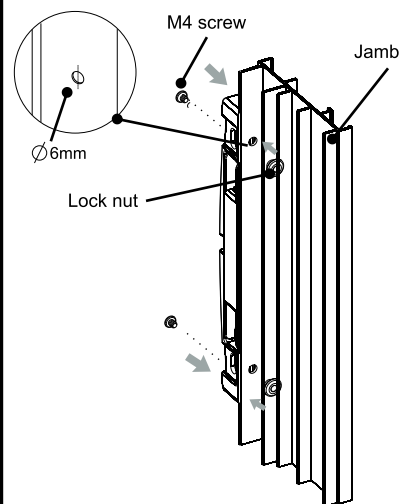
Using the machining details, machine holes for strike on jamb. For standard fixing, the holes must be Dia.3.5mm. Screw in place with 2 x 8G screws, but do not tighten. Close door & lock tongues into strike. This will locate the strike in the correct position on jamb. Tighten screws.

DS3000 WILL ONLY USE PIN CYLINDERS

7

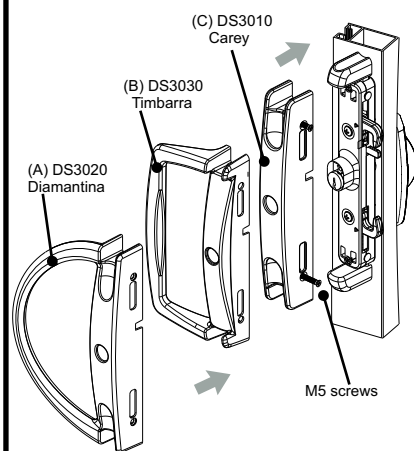
Insert Fixing of Strike

Cross fasten with 2 x M4 fixing screws using 2 x Lock nuts. Locate strike in correct position on jamb in relation to the lock body. Tighten screws.



8

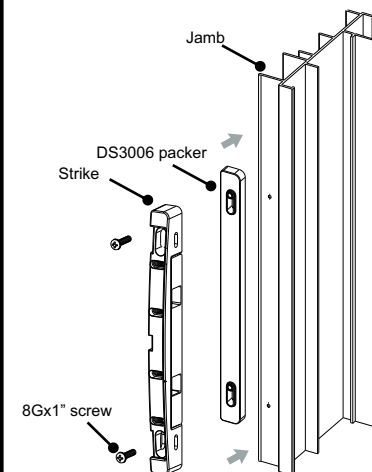
Test the lock mechanism again for all functions, including key operation from the external cylinder. When the lock is fully working, place cover (A,B or C) over the Ds3000 and fasten with 2 x M5 screws.



9

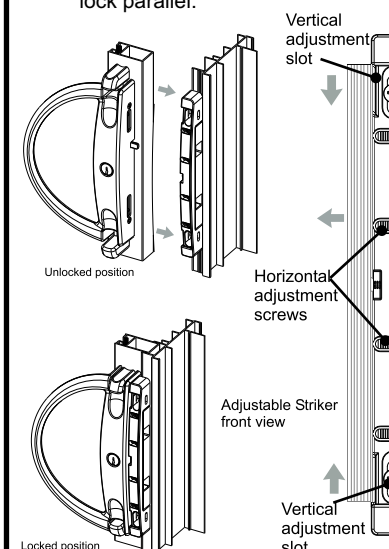
If packers are required, please use the supplied packer with 2x 8Gx1" screws that match the adjustable strike.

Place DS3006 packer on top of door jamb, matching up the holes, then place the adjustable strike over it. Fix into place with screws.



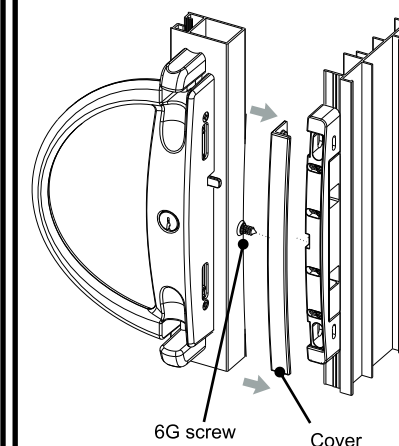
10

Once the strike is on the door jamb, test to see tongues engage the strike. If the tongues do not engage, adjust the vertical and horizontal adjustments. Keep the strike and lock parallel.



11

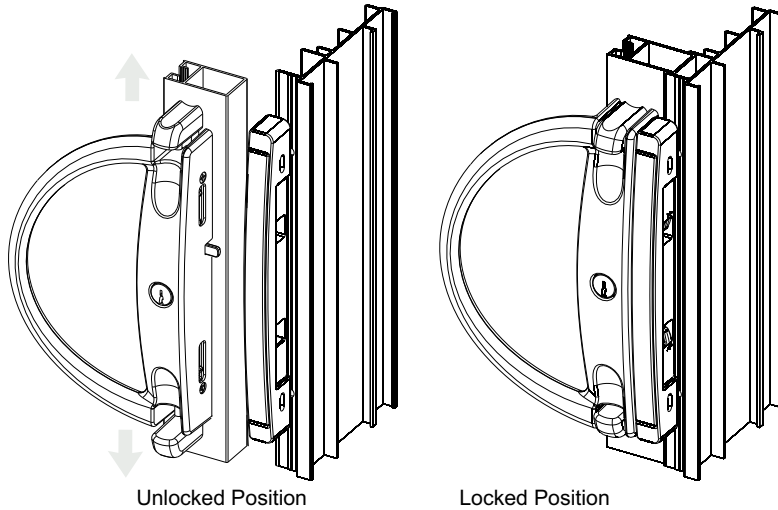
Once the lock is working correctly, place cover over strike using the 6G screw supplied.



NB: Once every month, clean internal and external levers with soap

12

The lock is now fully assembled and ready to be used. To lock the door, place key inside cylinder and turn it 180°. To take the key out, turn it anti-clockwise back to original position. The lock can also be used without a key, using the latches to operate the lock.

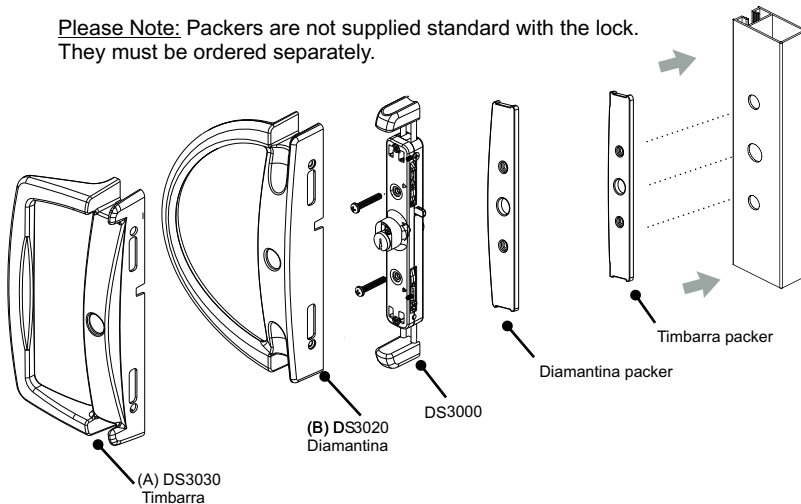


13

If packers are required, please use matching packer to the handle cover. When packers are no longer required, they can be thrown out for recycling.

Place packer on inside of door stile, matching up with the holes, then place DS3000 over it.

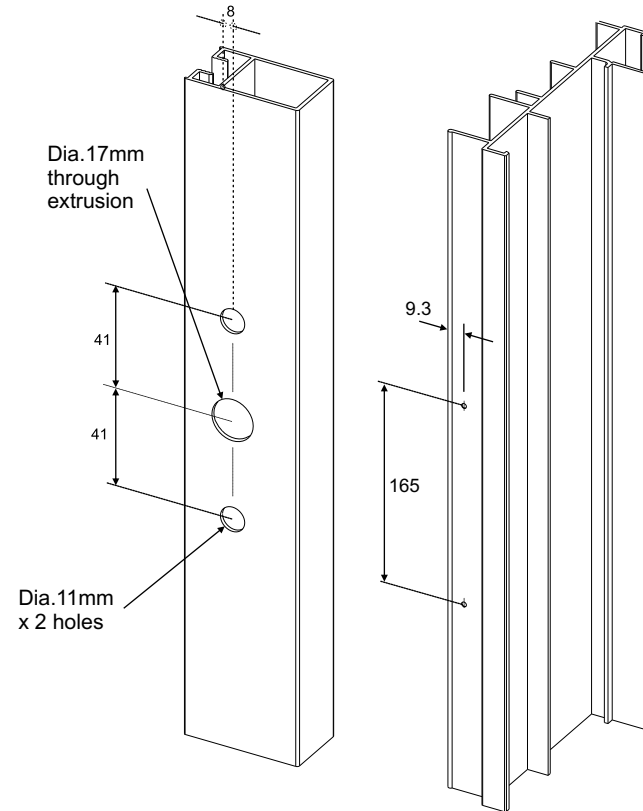
Please Note: Packers are not supplied standard with the lock. They must be ordered separately.



160 Newton Rd,
Wetherill Park
NSW 2164 AUSTRALIA
Tel: +61 2 9609 2555
Fax: +61 2 9604 2910

www.doric.com.au
info@doric.com.au

Machining Details to suit DS3000 Range Locks



5mm min - 8mm
max cylinder tail
projection.

Note: Bosses must
sit up against internal
rib.

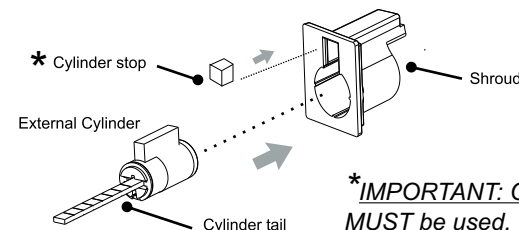
**SUITS PIN
CYLINDERS
ONLY**

DS3000 Fitting Instructions

1

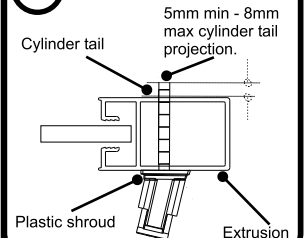
Insert cylinder into shroud, then push the cylinder stop into place. The cylinder stop will stop the cylinder from falling out of the shroud.

Check the length of the cylinder tail on exterior handle. The length of the tail may need to be cut, please use guide 1A to cut the cylinder tail to correct length.



***IMPORTANT: Cylinder stop
MUST be used.**

1A



**NOTE: Warranty is void if these
instructions are not adhered to.**