



DN8000 HIGH PERFORMANCE
MULTI-POINT LOCKING SYSTEM



AWARD WINNING

Sleek & stylish



Self latching
in high winds



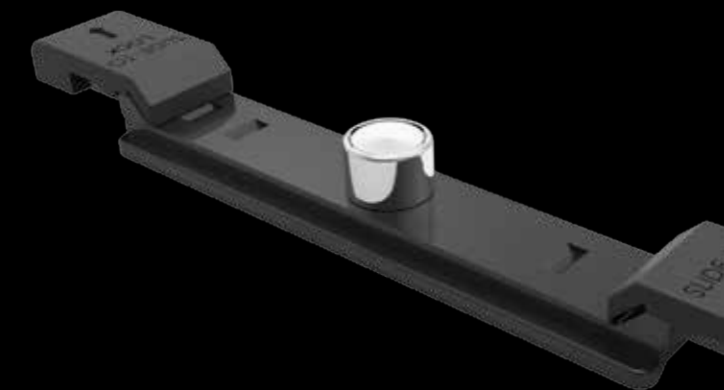
High performance
locking system





OVERVIEW

PRODUCT OVERVIEW	3
HANDLE OPTIONS	4
MAIN TRANSMISSION	5
SYSTEM APPLICATION	6
ACCESSORIES	8
LOCKING POINT ASSEMBLY	12
SELF LATCHING	13
MATERIAL OPTIONS / BENEFITS	16





DN8000

MULTI-POINT LOCK SYSTEM



The Award Winning DN8000 Series Multi-point Euro groove locking system is a suitable for use on awning and casement windows.

Designed and developed specifically for high performance windows, this innovative system can be tailored to suit a range of opening configurations, sizes but more importantly conditions.

FEATURES

- Suitable for use on awning & casement windows
- Locking points determined by window size along with other key factors i.e. wind loads +/-
- Modern and stylish lever handle design
- Handle available in a wide range of powder coated colours
- Easy to operate regardless of window size and configuration

DN8000

MULTI-POINT LOCK SYSTEM

DN8002 - STAINLESS STEEL

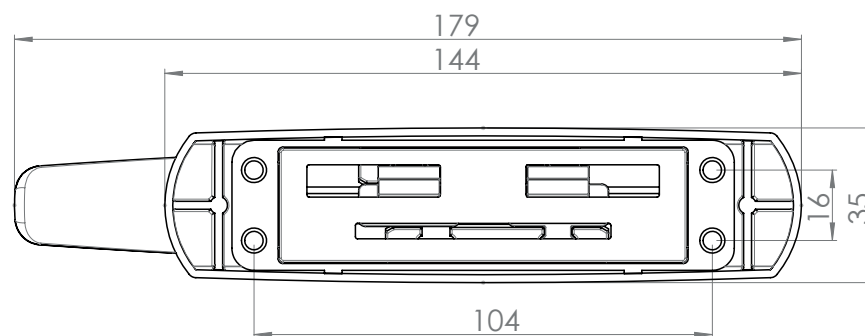
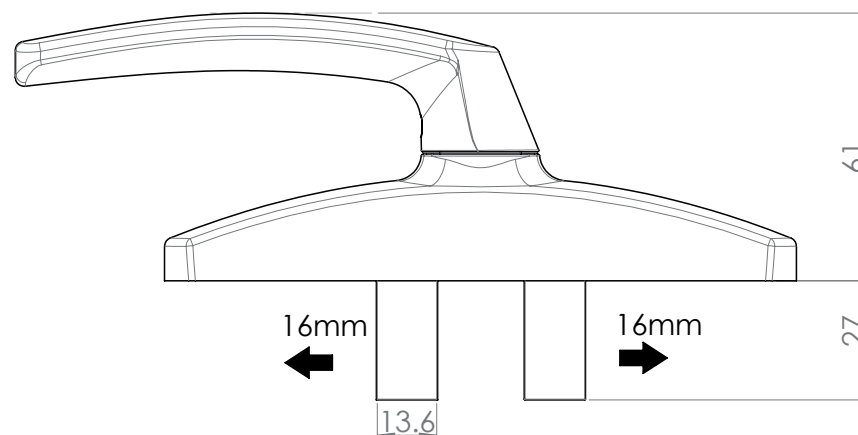


MDN8006 - POWDER COATED

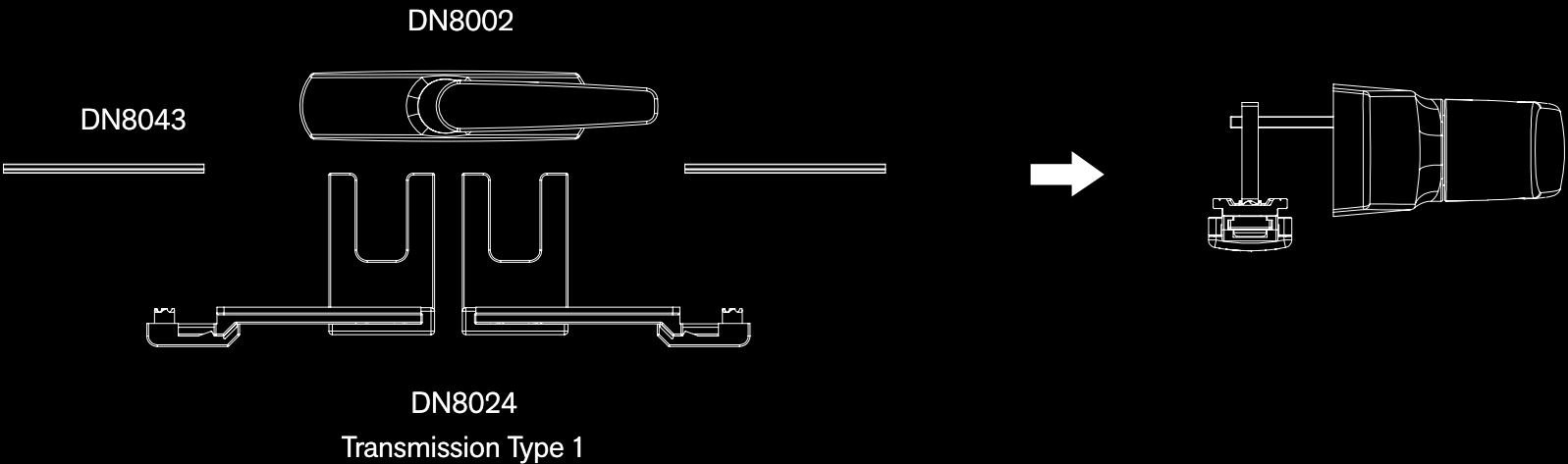


Double Action Furniture

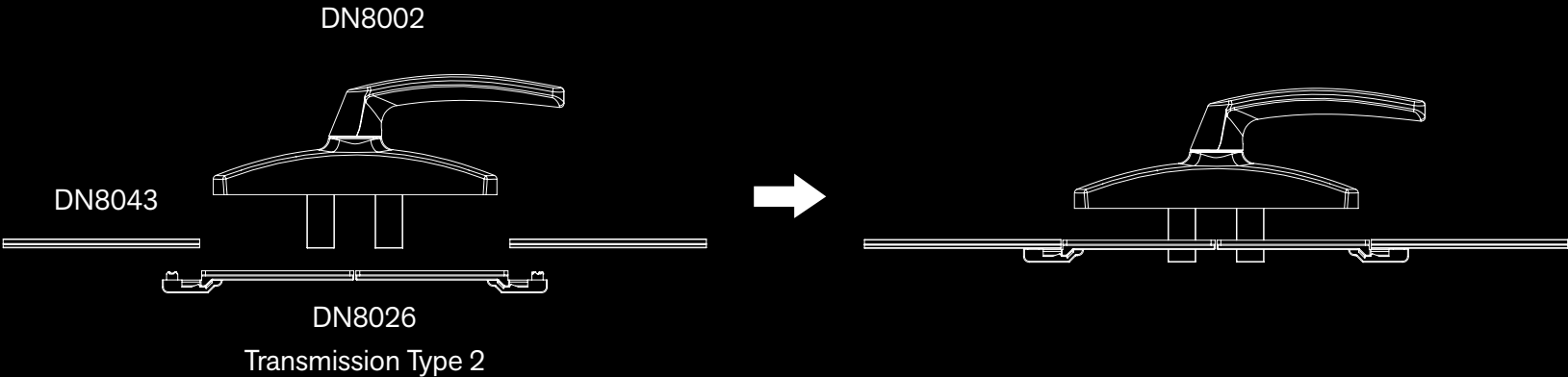
PRODUCT CODE	DESCRIPTION	HANDLE & COVER MATERIAL
DN8002	Stainless Steel Handle - Double Action	Stainless Steel
MDN8006	Aluminium Handle - Double Action	Aluminium



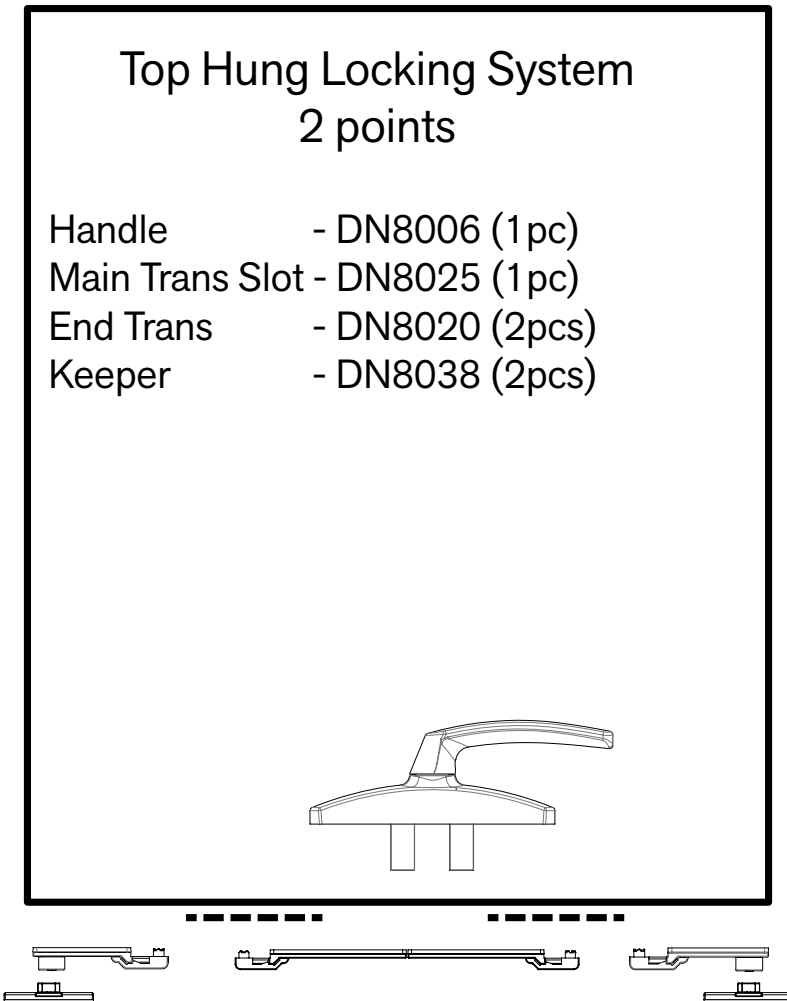
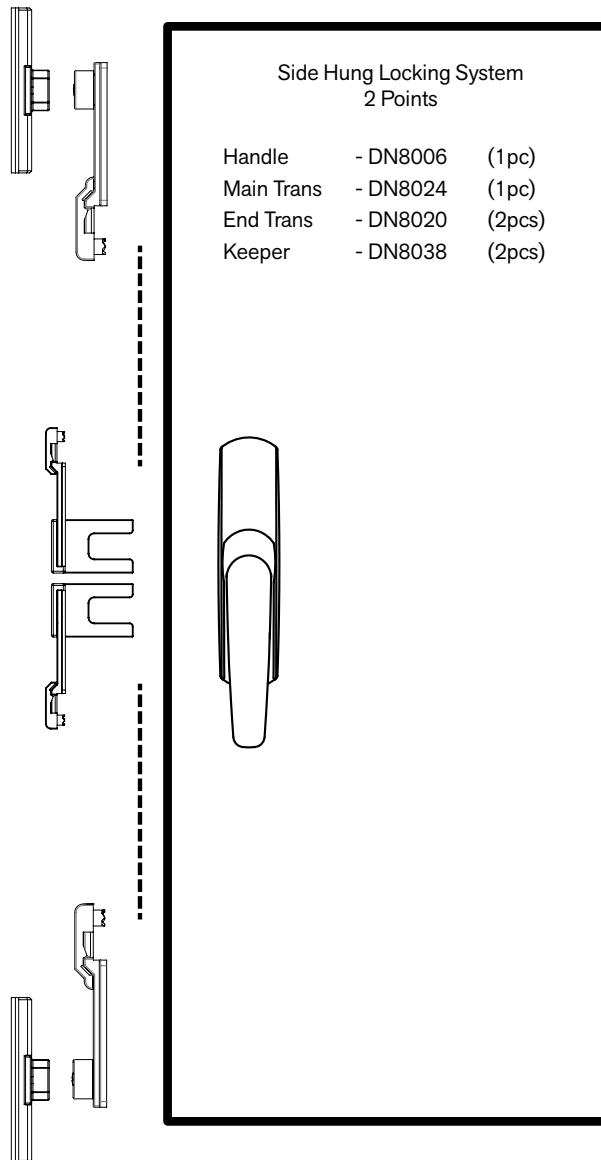
Back Mounted



Top Mounted

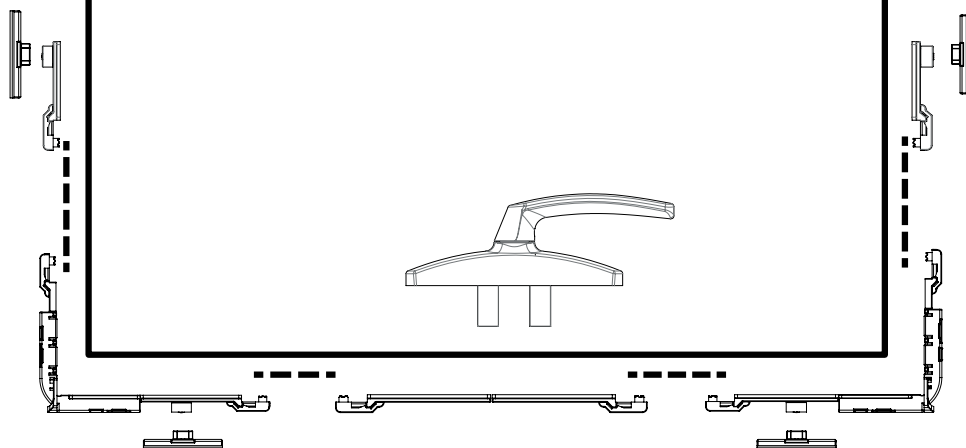


SYSTEM APPLICATION



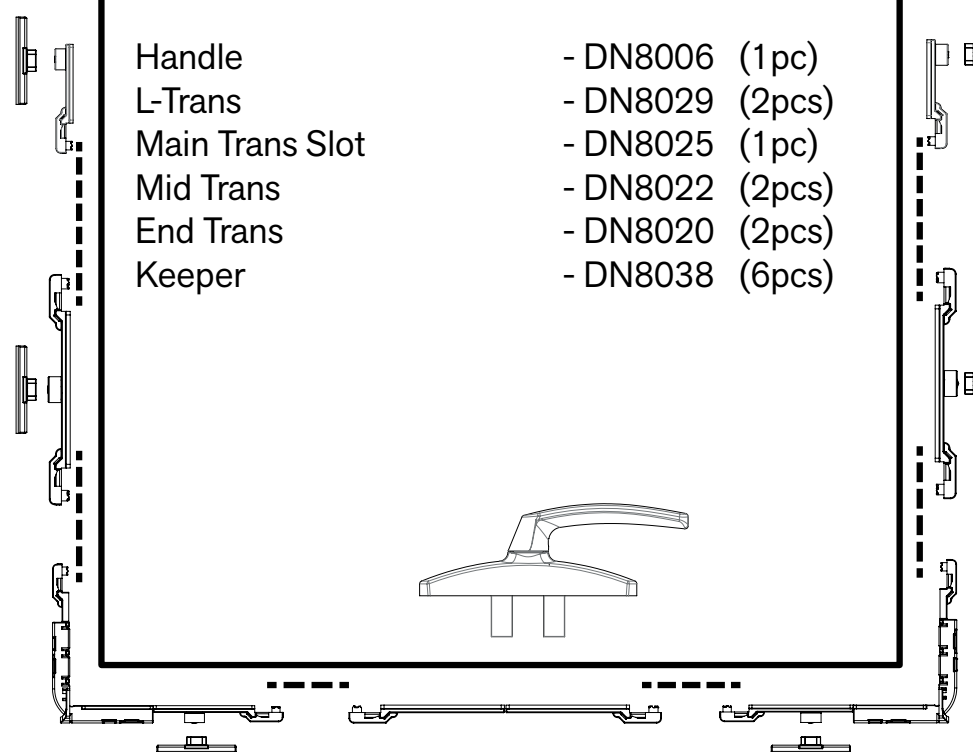
Top Hung Locking System 4 points

Handle	- DN8006 (1pc)
L-Trans	- DN8029 (2pcs)
Main Trans Slot	- DN8025 (1pc)
End Trans	- DN8020 (2pcs)
Keeper	- DN8038 (4pcs)

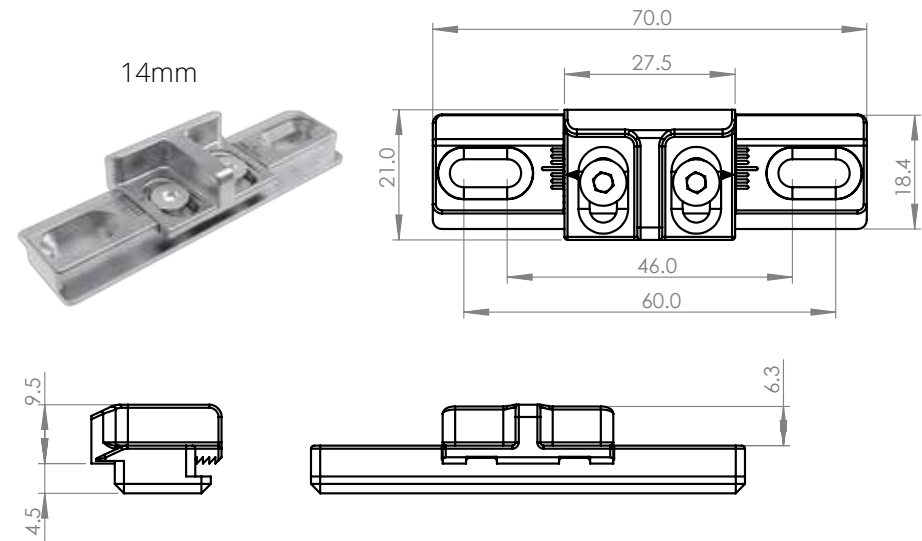


Top Hung Locking System 6 points

Handle	- DN8006 (1pc)
L-Trans	- DN8029 (2pcs)
Main Trans Slot	- DN8025 (1pc)
Mid Trans	- DN8022 (2pcs)
End Trans	- DN8020 (2pcs)
Keeper	- DN8038 (6pcs)

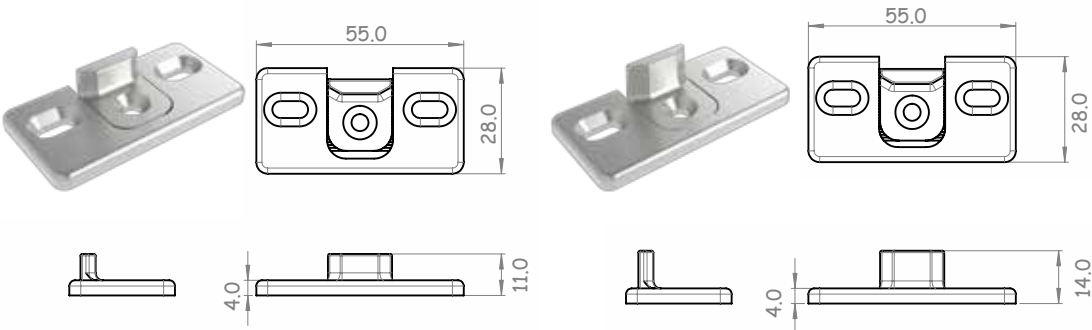


Euro Groove Keeper



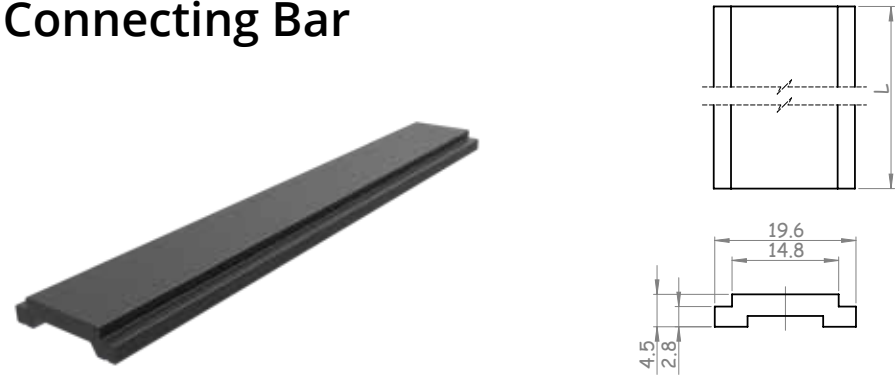
PRODUCT CODE	DESCRIPTION	MATERIAL
DN8038	Euro Groove keeper - 14mm	Stainless Steel
DN8039	Euro Groove keeper - 14mm	Zinc

Adjustable Flat Keeper



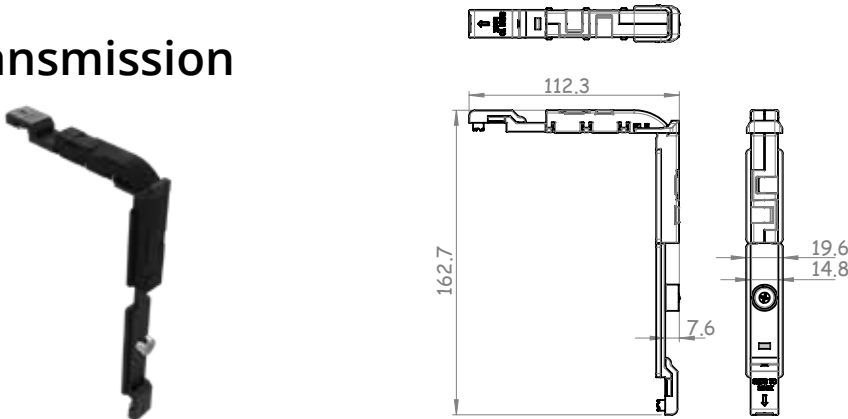
PRODUCT CODE	DESCRIPTION	MATERIAL
DN8031	Adjustable Flat Keeper - 11mm	Die Cast Zinc
DN8032	Adjustable Flat Keeper - 11mm	Stainless Steel (316)
DN8033	Adjustable Flat Keeper - 14mm	Die Cast Zinc
DN8034	Adjustable Flat Keeper - 14mm	Stainless Steel (316)

Connecting Bar



PRODUCT CODE	DESCRIPTION	MATERIAL
DN8043	Connecting Bar to suit Euro Groove Profile 15/20mm	Polyamide

L - Transmission

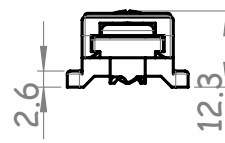
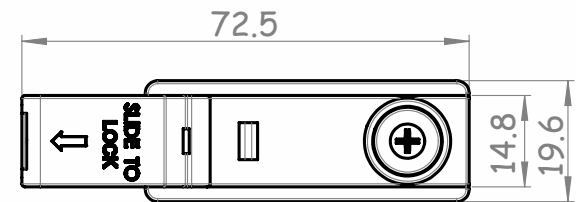


PRODUCT CODE	DESCRIPTION	MATERIAL
DN8029	L - Transmission Drive	Polesium
DN8030	L - Transmission Drive	Stainless Steel (316)

End Transmission



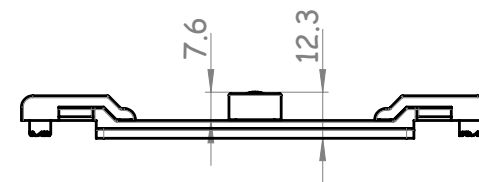
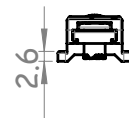
PRODUCT CODE	DESCRIPTION	MATERIAL
DN8020	End Transmission	Polesium
DN8021	End Transmission	Stainless Steel (316)



Mid Transmission



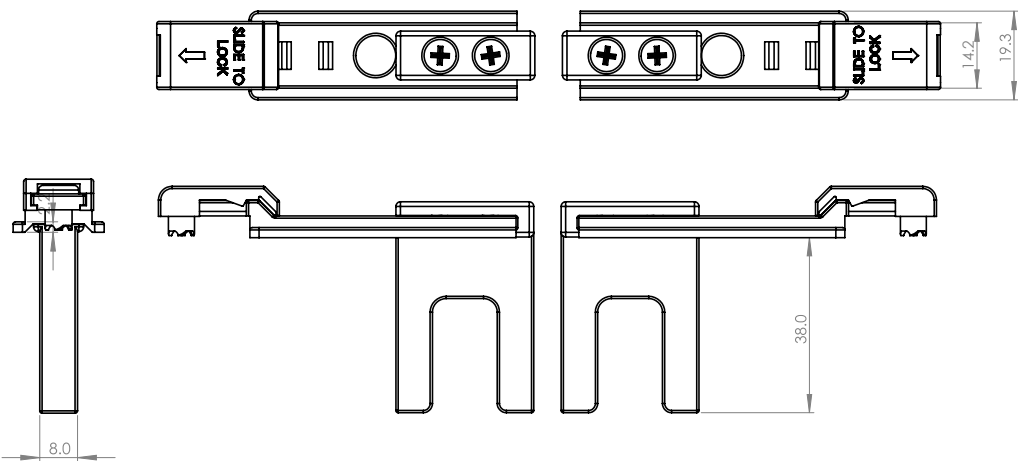
PRODUCT CODE	DESCRIPTION	MATERIAL
DN8022	Mid Transmission	Polesium
DN8023	Mid Transmission	Stainless Steel (316)



Main Transmission Type 1



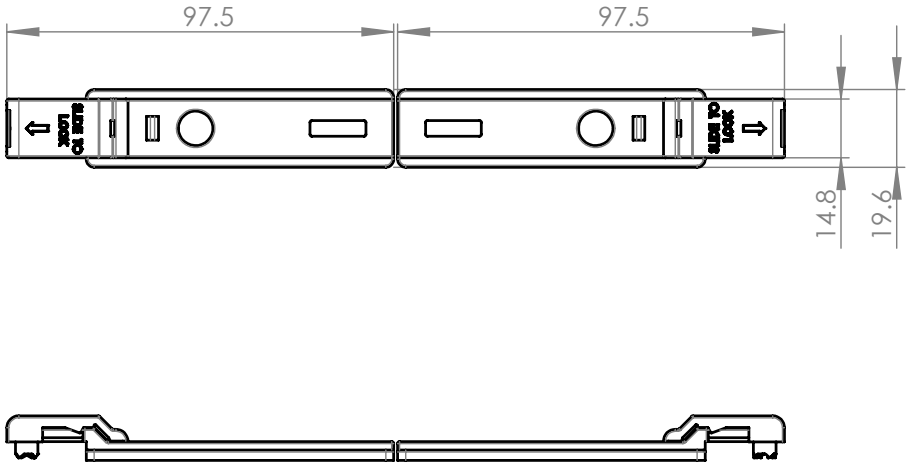
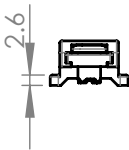
PRODUCT CODE	DESCRIPTION	MATERIAL
DN8024	Main Transmission Type 1	Stainless Steel & Die Cast Zinc



Main Transmission Type 2



PRODUCT CODE	DESCRIPTION	MATERIAL
DN8025	Main Transmission Type 2	Polesium
DN8026	Main Transmission Type 2	Stainless Steel (316)

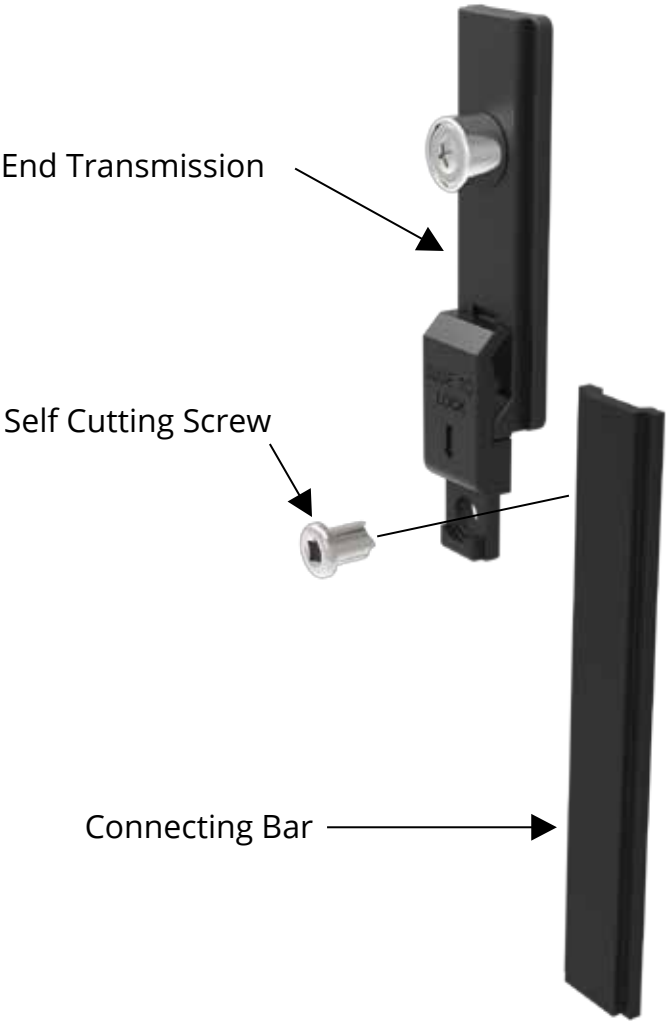




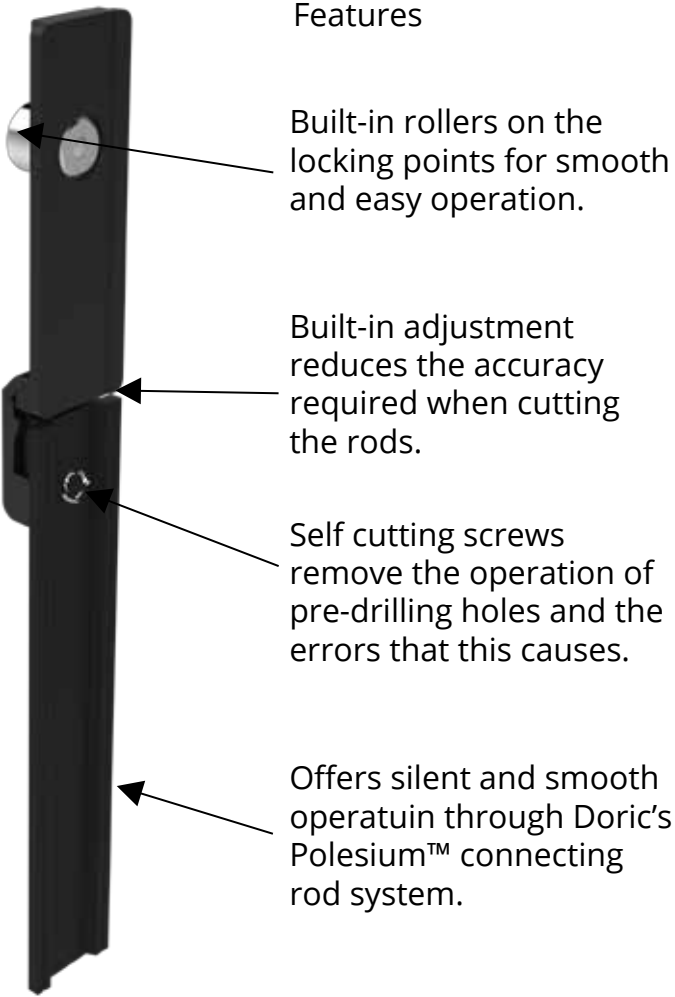
Mid Transmission

LOCKING POINT ASSEMBLY

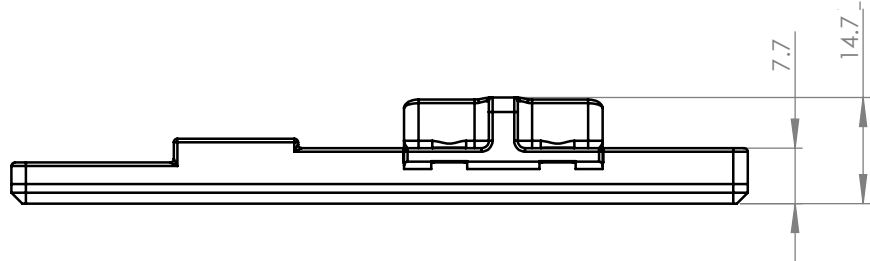
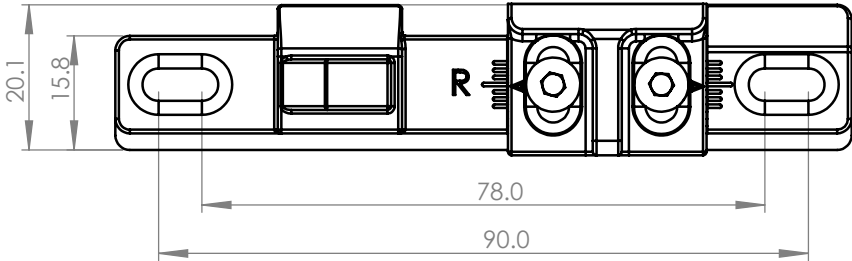
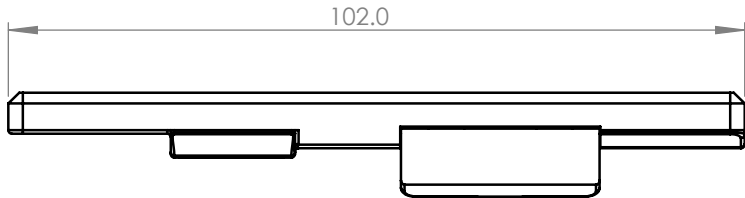
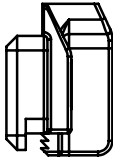
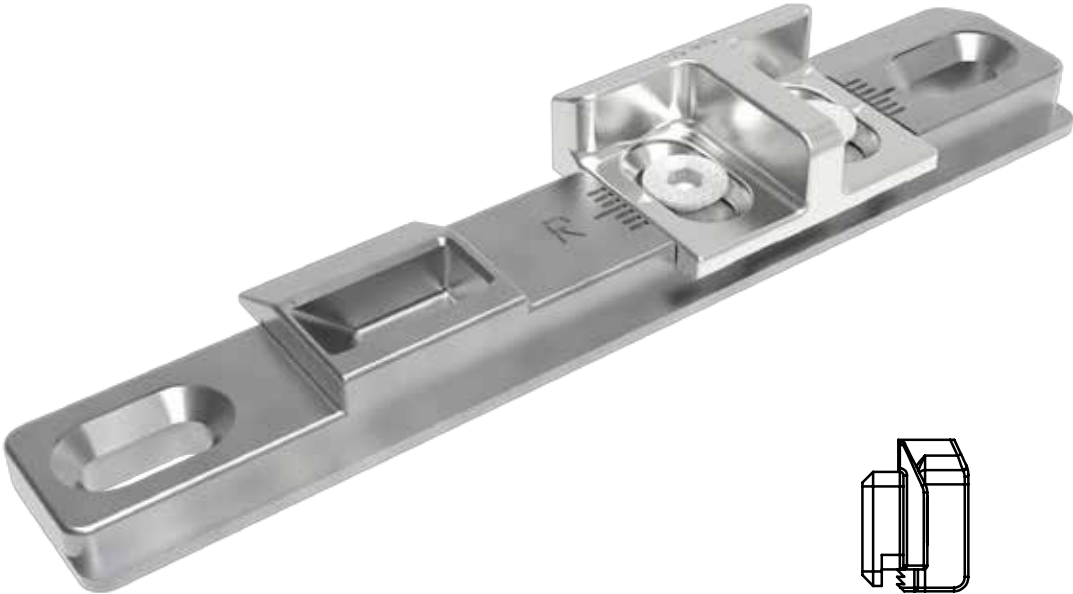
Before Installation



After Installation

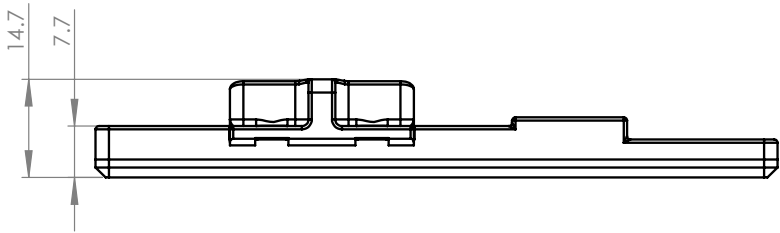
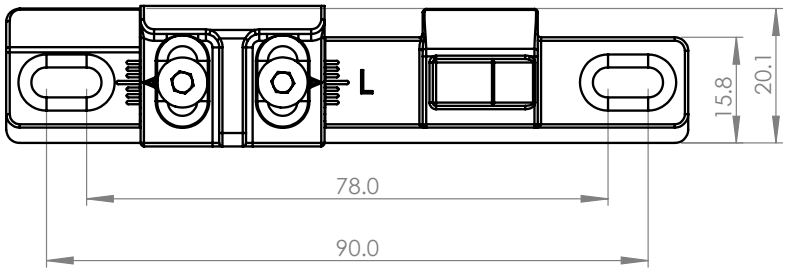
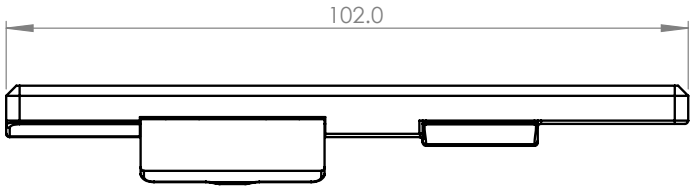
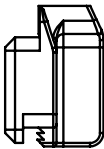
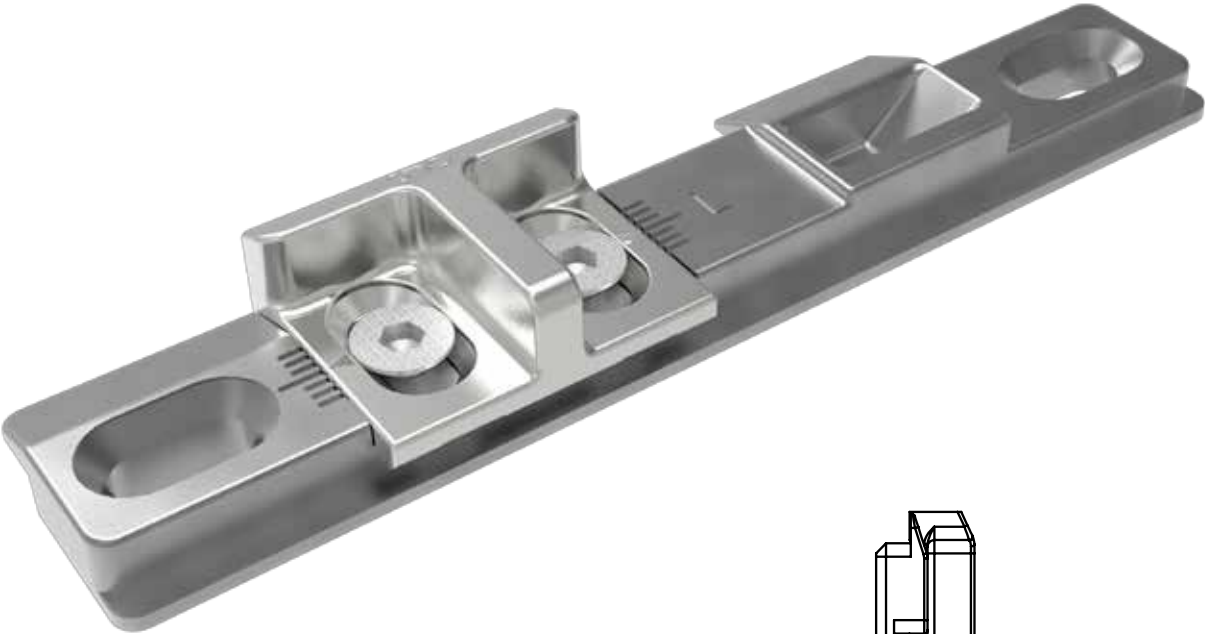


DN8044 R/H SELF LATCHING KEEPER



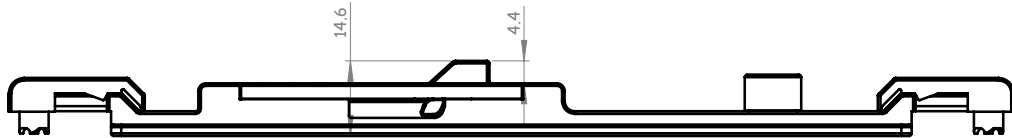
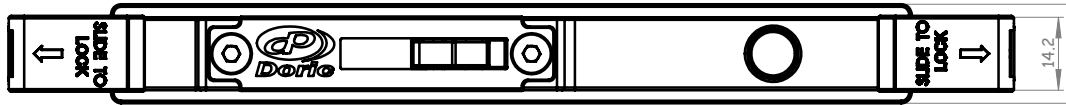
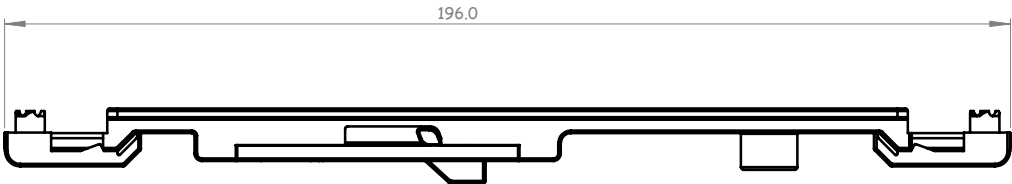
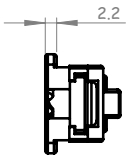
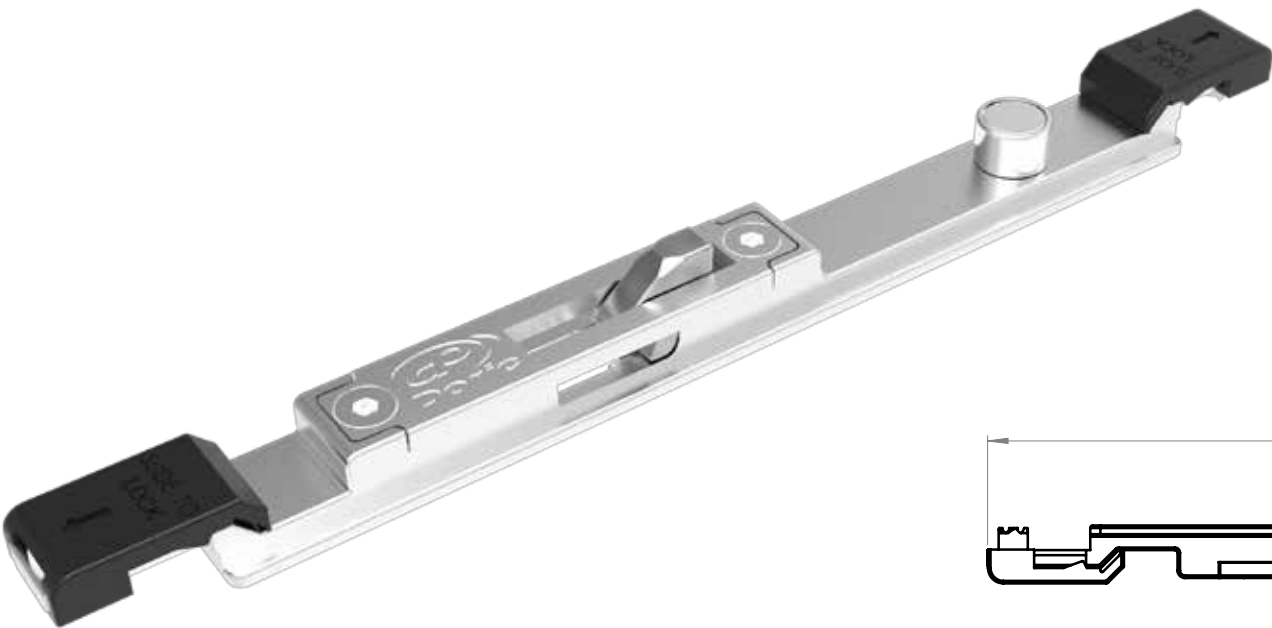
PRODUCT CODE	DESCRIPTION	MATERIAL
DN8044	R/H Self Latching Keeper	Stainless Steel (316) & Die Cast Zinc

DN8045 L/H SELF LATCHING KEEPER



PRODUCT CODE	DESCRIPTION	MATERIAL
DN8045	L/H Self Latching Keeper	Stainless Steel (316) & Die Cast Zinc

DN8046 SELF LATCHING UNIT



PRODUCT CODE	DESCRIPTION	MATERIAL
DN8046	Self Latching Unit	Stainless Steel (316) & Die Cast Zinc

POLESIUM™

The DN8000 is available in 2 different materials which ultimately deliver varying performance levels depending on the application and specification of the project.

Polesium™ was developed in early 1990's as a solution to the mixed demands of functionality, durability, corrosion resistance and economy.

This material was developed as an extension of the use of engineered polymers in the automotive industry and examples of this include the use of similar materials in engine intake manifolds for makes such as BMW.

Polesium™ is a highly engineered polymer that demonstrates exceptional material properties including:

- Less than .2% moisture absorption. Very stable in high humidity.
- Excellent heat stability with a very high softening point.
- Essentially impervious to chemical attack.
- Very high strength to weight ratios making it a genuine alternative to traditional cast alloys such as zinc and aluminium.
- Excellent UV stability configuration.

STAINLESS STEEL

Stainless Steel will add to the overall end cost of any project but Stainless Steel delivers an extremely strong, extremely durable and essentially corrosion free product for those projects that demand the very best.

Doric has used and developed both Polesium™ and Stainless Steel in its hardware lines since 1991 and has produced more than 15,000,000 hardware items based on this material since then products such as sliding door deadlocks, door furniture, chainwinder housings, roller carriages and many more items are still in operation after 25 years service.

DN8000 – PRIMARY OPTIONS

Multi-Point Locking System – 3 Options

- Polesium™ w/Aluminium PC Handle
- Stainless Steel w/Aluminium PC Handle
- Stainless Steel w/Stainless Steel Handle

Self Latching System – SLS

- Stainless Steel Locking & Latching
- Only compatible with Doric Multi-Point System
- Min 2 points which are handed L/R



SYDNEY
38 Redfern St,
Wetherill Park
Sydney, NSW 2164
Australia
Ph: +61 2 9609 2555
Fax: +61 2 9404 2910

www.doric.com.au

AUCKLAND
26/C Triton Drive,
Albany, North Shore,
New Zealand 0632
Auckland
Ph: +64 9 415 5535
Fax: +64 9 415 5545

www.doricnz.co.nz

KUALA LUMPUR
7 Jalan Bulan U5/170
Bandar Pinggiran Subang,
40150 Shah Alam
Selangor, Malaysia
Ph: +60 3 7845 5017
Fax: +60 3 7845 5014

www.doric.com.my

