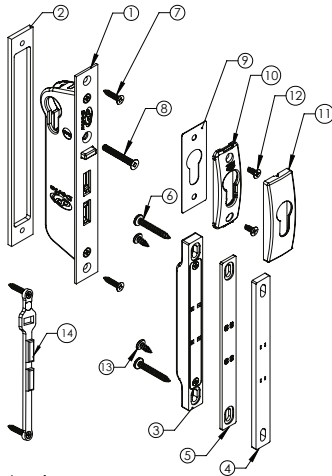


FITTING INSTRUCTIONS Evolution Lockbody

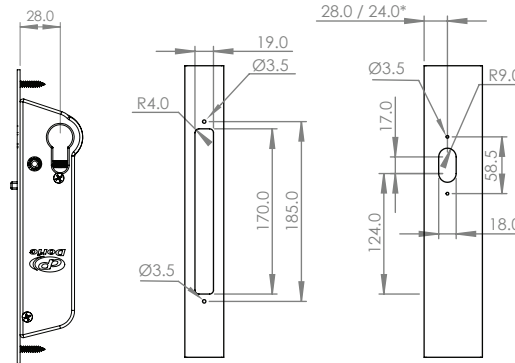
DN1290-30/DN1290-40
Lockbody
DS1255 Escutcheon

1. DN1290 Lockbody
2. Faceplate Packer
3. Keeper
4. Keeper Packer 5mm
5. Keeper Packer 2.5mm
6. 10G x 35mm (2x)
7. 8G x 20mm (2x)
8. M5 x 30/40mm
9. Escutcheon gasket
10. Escutcheon base
11. Escutcheon plate
12. 8G x 10mm (2x)
13. 10G x 12mm (2x)
14. Keeper Jig

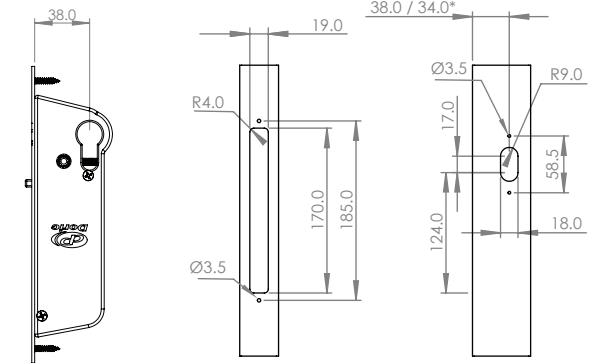


60mm cylinder for 36mm wide extrusion
70mm cylinder for 41mm wide extrusion

30mm Backset:

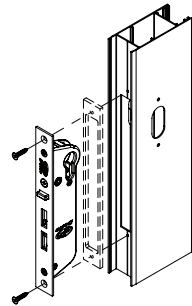
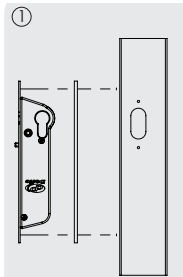


40mm Backset:



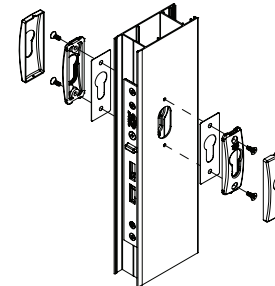
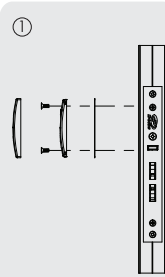
* Use with face-plate packer

1



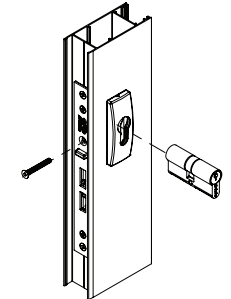
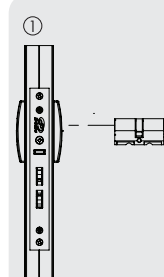
- 1) Align face packer if required (refer to third page). Insert the lockbody into the extrusion. Ensure that the cylinder is located on the top.
- 2) Fasten the lockbody with two supplied 8G x 20mm screws.

2



- 1) Fasten the gasket and escutcheon base onto the extrusion with two supplied M3 x 10mm screws. Press the escutcheon plate onto the escutcheon base until it snaps on.
- 2) Repeat step 2.1 with the opposing side, if fitted.

3



- 1) Ensure that the cam of the cylinder is in the home position.
- 2) Center the cylinder in the extrusion. Fix the cylinder with the M5 screw supplied with the lockbody.

EVOLUTION | DN1290 DN1255

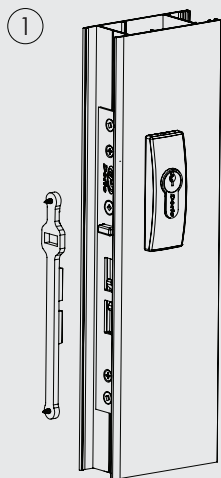
Head office:
38 Redfern St
Wetherill Park NSW 2164
Australia

Ph: 1300 132 389
Fax: 1300 652 292
sales@doric.com.au
www.doric.com.au



FITTING INSTRUCTIONS Keeper

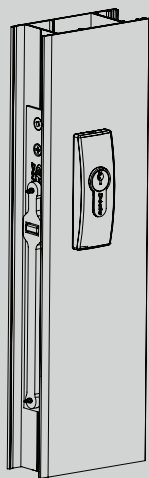
4



1) Align the jig with the lock, so that the screws are facing outward.

2) Press the jig onto the lock.

2



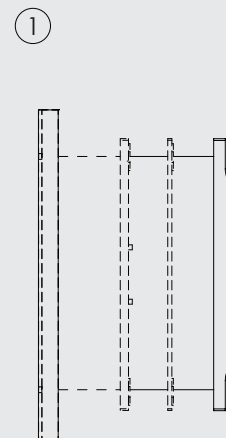
5

1) Close the door with the same speed as normal. The screws on the jig will create an indent in the meeting stile, marking the drill holes for the keeper mounting screws.

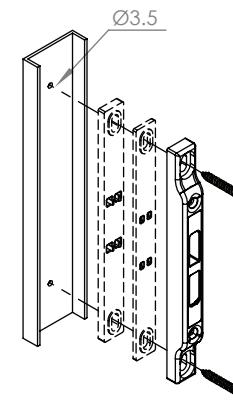
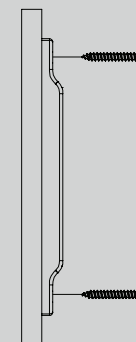
2) Open the door and remove the jig.

3) Drill two Ø 3.5 [mm] holes where the indents are.

6



2



1) Align the striker in its desired position.

2) Fix the striker to the meeting stile with either the two supplied 10G x 12mm or 10G x 35mm screws.

Note: Longer screws may be required for some configurations.