

LCD SERIES LARGE SINGLE CHAIN ACTUATOR



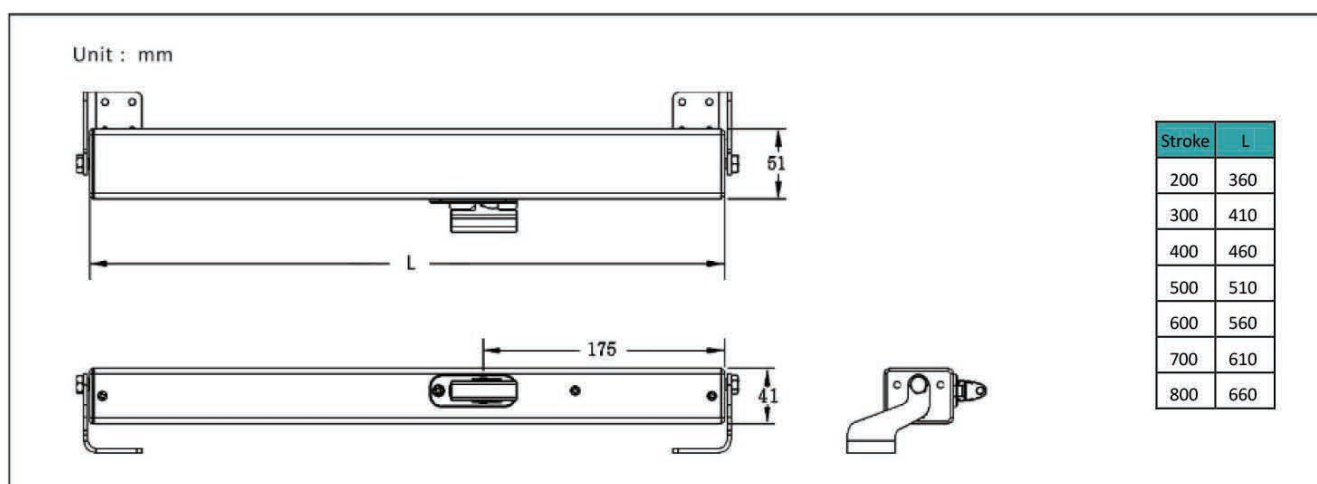
Feature

- DC24V safe voltage
- Push/Pull Force 400N
- Simple but delicacy design, low noise operation
- Sandblasted oxidative surface treatment
- Silver color standard, other colors can be customized
- Double link chain working more stably and smoothly
- Flexible optional installation
- Electronic overload cutoff
- Endurance tests (30,000 cycles) are carried out

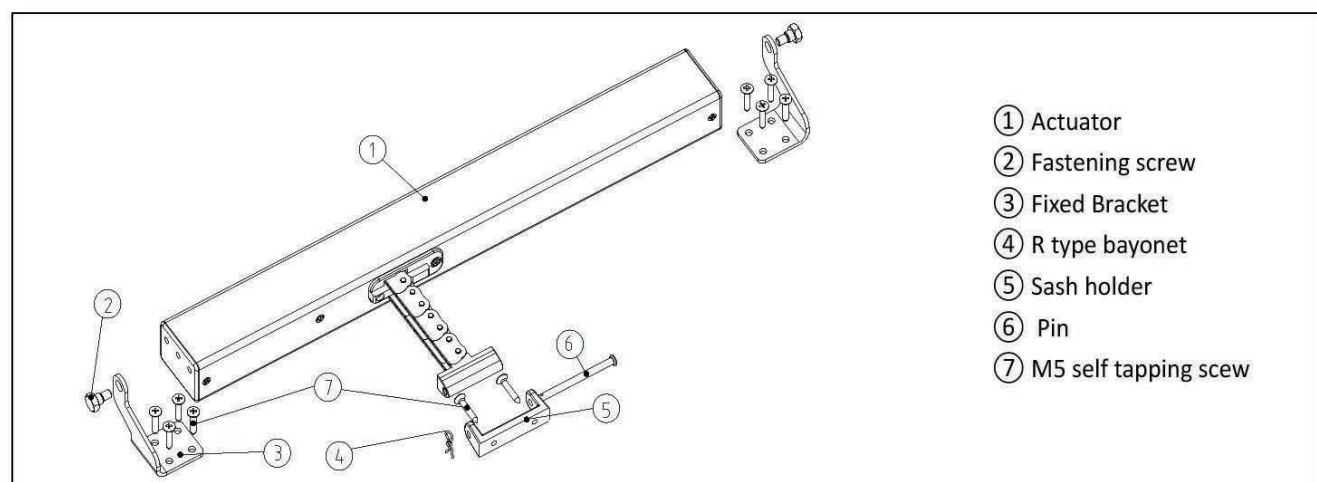
Specification

Specification	Unit	Technical Data
Working Voltage	V	DC24V
Max. Current	A	1.5
Push/Pull Force	N	400
Travel Distance	mm	200 ~ 800
Travel Speed	mm/s	8
Protection Class	IP	32
Working Temperature	°C	-20 ~ +65
Dimension	mm	51*41*360~660

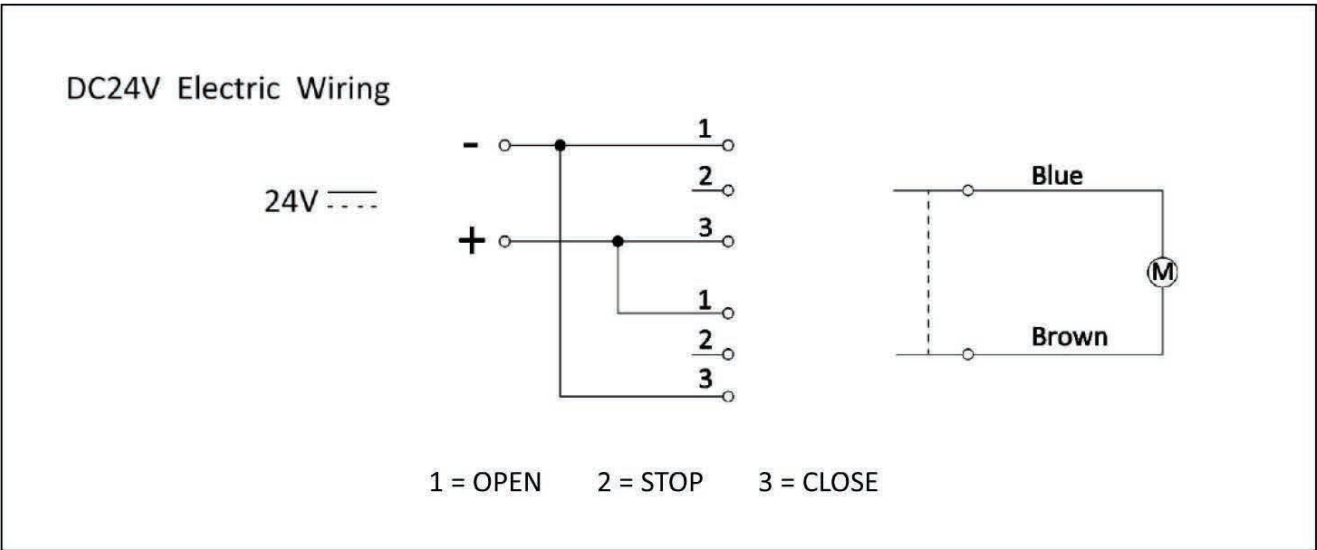
Dimension



Accessory Description



Electric Wiring



Solution



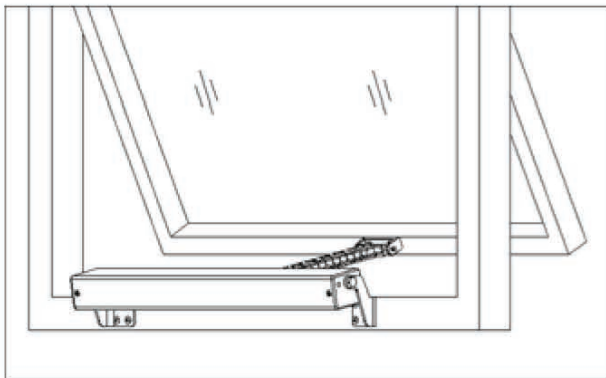
Application

LCD series actuators can be used in fire smoke removal, smart home, outdoor shaded, sun room, applied to awning window, casement window and skylight.

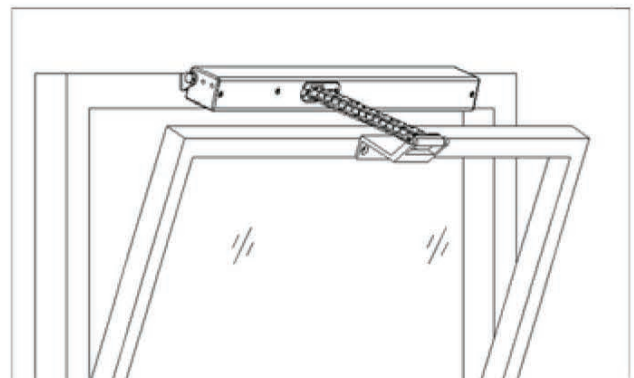


Installation

Installation of LCD is flexible. It can be installed on inward-opening window or outward-opening window by suitable brackets.



Outward-opening Window



Inward-opening Window

Installation Notices

- The actuator must be installed by professional technician
- When installing, make sure the window actuator is matching with the window
- The power supply of LCD must comply with the power of DC24V/4A
- Between actuator and main power supply must be a switch to cut power off
- Making sure that power is off before power actuator on
- Be careful when installing the actuator, avoiding the window closed accidentally causing injuries to person
- Do not disassemble the internal parts of the actuator, if unusual please contact supplier