

TC SERIES TWIN CHAIN ACTUATOR



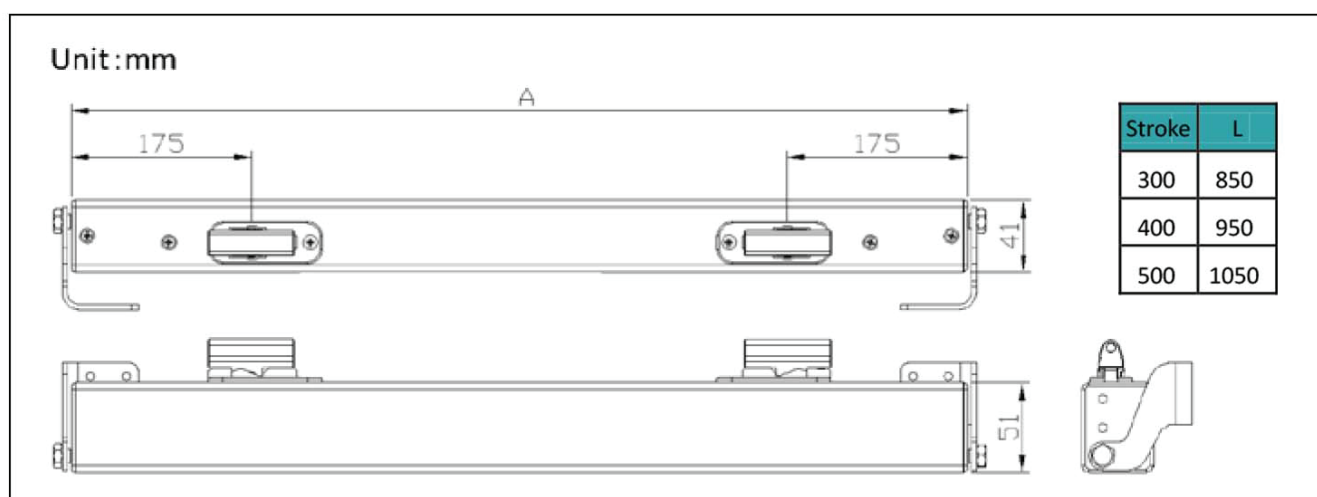
Feature

- DC24V safe voltage
- Push/Pull Force 800N
- Ideal for window wider than 1500X1500 mm
- Simple but delicacy design, low noise operation
- Sandblasted oxidative surface treatment
- Silver color standard, other colors can be customized
- Double link chain working more stably and smoothly
- Flexible optional installation
- Electronic overload cutoff
- Endurance tests (30,000 cycles) are carried out

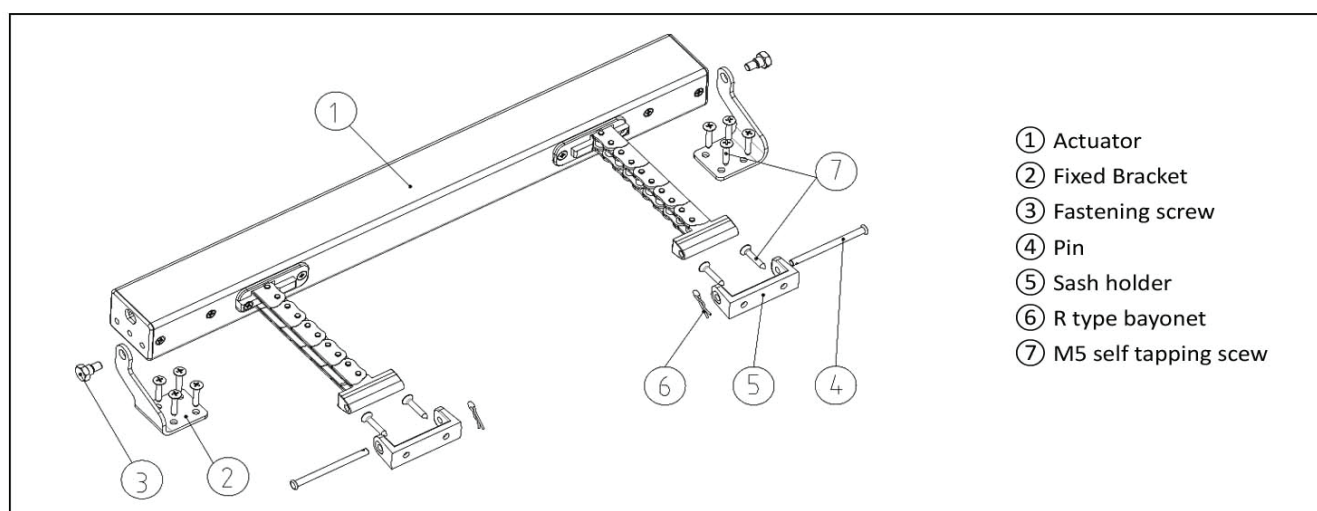
Specification

Specification	Unit	Technical Data
Working Voltage	V	DC24V
Max. Current	A	3.0
Push/Pull Force	N	800
Travel Distance	mm	300/400/500
Travel Speed	mm/s	8
Protection Class	IP	32
Working Temperature	°C	-20 ~ +65
Dimension	mm	51*41*850/950/1050

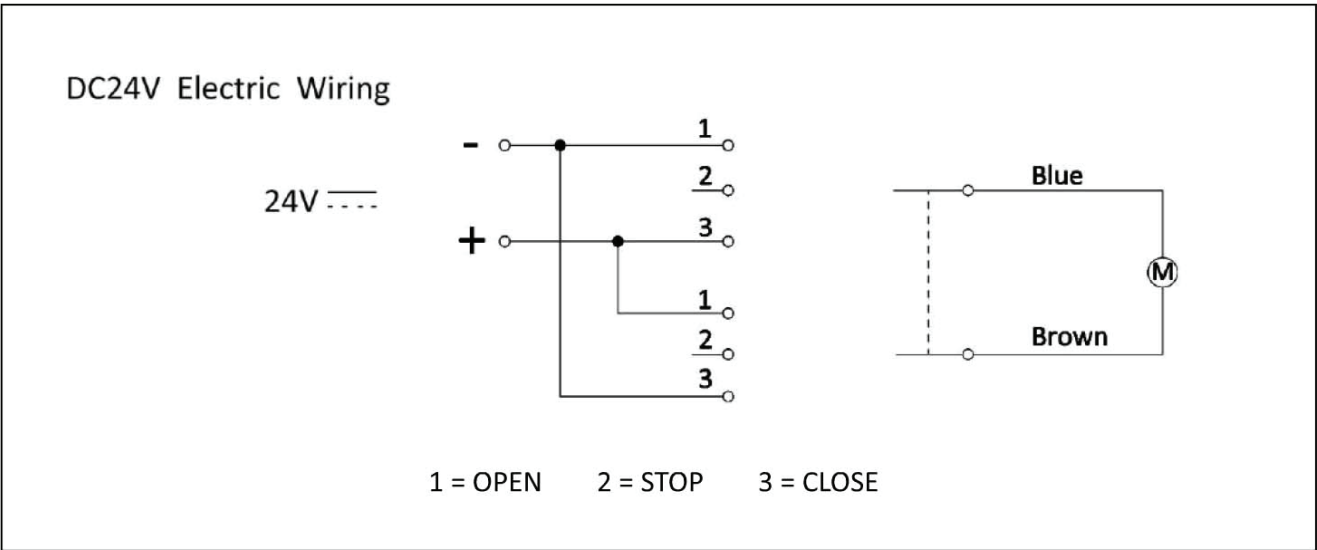
Dimension



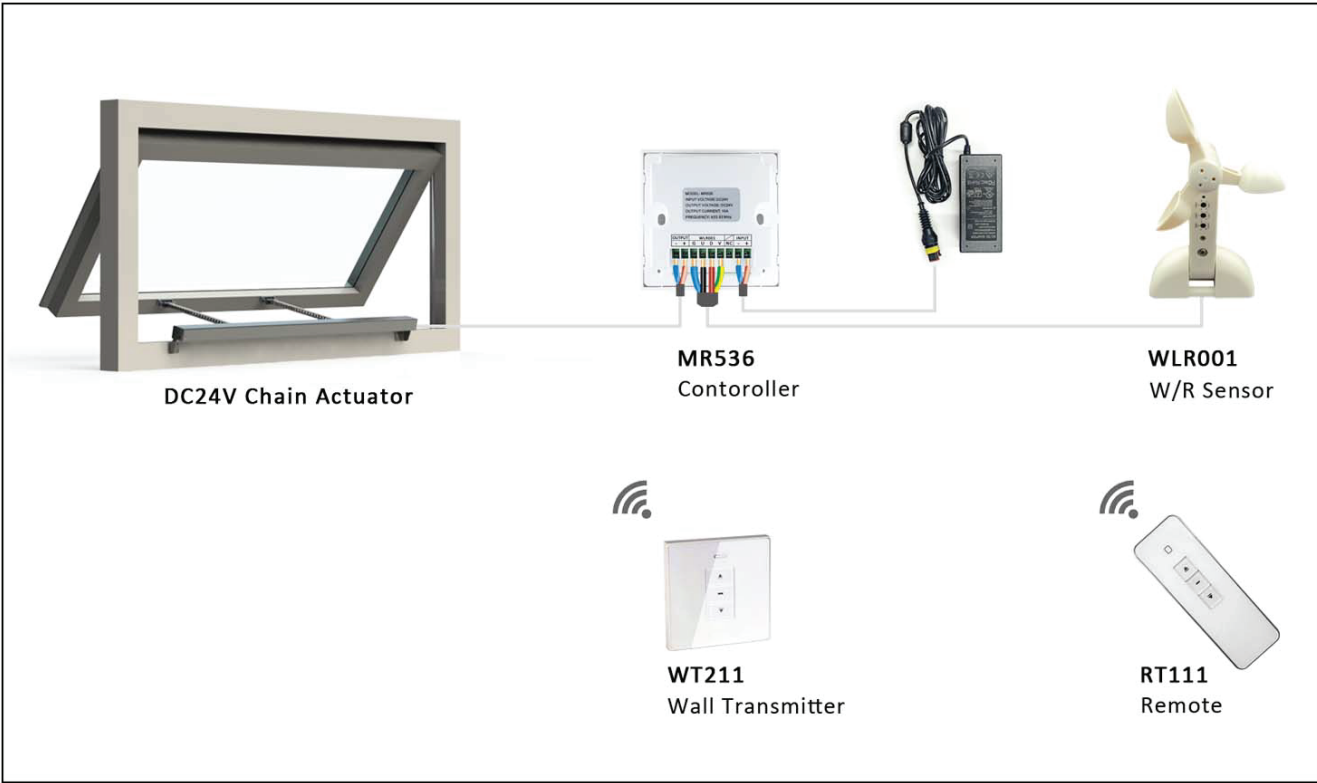
Accessory Description



Electric Wiring



Solution



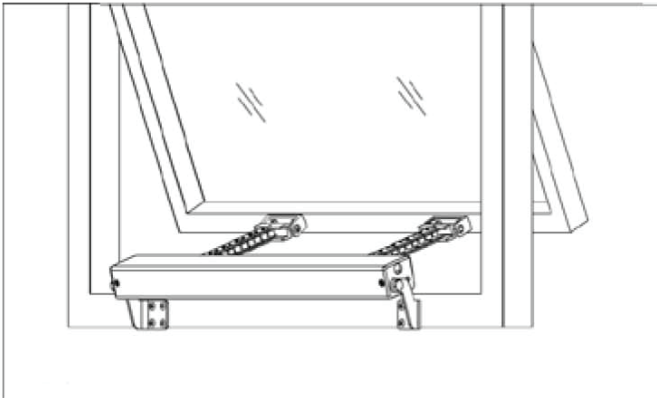
Application

TC series actuators can be used in fire smoke removal, smart home, outdoor shaded, sun room, applied to awning window, casement window and skylight.

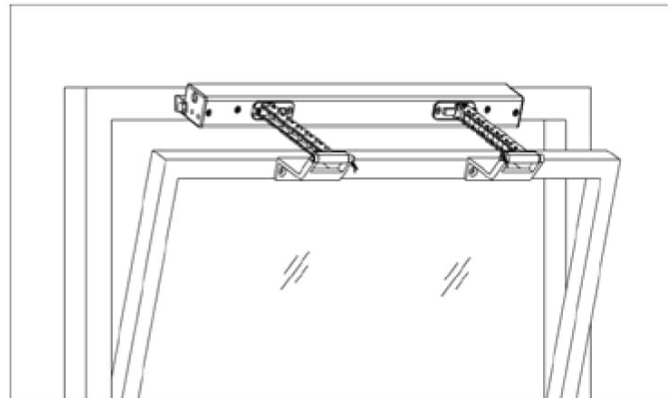


Installation

Installation of TC is flexible. It can be installed on inward-opening window or outward-opening window by suitable brackets.



Outward-opening Window



Inward-opening Window

Installation Notice

- The actuator must be installed by professional technician
- When installing, make sure the window actuator is matching with the window
- The power supply of actuator must comply with the power of DC24V/4A
- Between actuator and main power supply must be a switch to cut power off
- Making sure that power is off before powering actuator on
- Be careful when installing the actuator, avoiding the window closed accidentally causing injuries to person
- Do not disassemble the actuator, if unusual please contact supplier