



DN450 | MKII TWIN
CHAINWINDER

DN450 | MKII TWIN CHAINWINDER

The ultimate chainwinder, unrivalled and unmatched for large awning windows.

The DN450 MkII Twin Chainwinder is an upgrade on Doric's market-leading DN400 Twin Chainwinder, featuring a range of new features to deliver the ultimate solution in awning window control.

Unlike other operators on the market, the DN450 is manufactured using an extruded aluminium body which allows users to colour match into their environment seamlessly whilst exceeding corrosion resistance benchmarks.

Accompanied with our innovative adjustable chain restriction, the DN450 provides a solution to suit both residential and commercial settings, while complying with NCC standards and ICP 005.



ADVANTAGES



ADJUSTABLE CHAIN RESTRICTION

Allows users to limit openings from 110mm to 265mm to comply with NCC standards and ICP 005 "Window Prevention & Protection of Openable Windows".



EASY LINK SASH PLATE

Attaching the pitching chain is fast and easy with the Easy Link Sash Plate.



LARGER CHAIN PITCHING

Includes a 600mm chain pitching, allowing the chain to be mounted closer to the corners of a window, for better window performance.



EXTRUDED ALUMINIUM BODY

Can be Powder coated to colour match or contrast any window frame extrusion.



FOLD DOWN LEVER

Similar to other Doric chainwinders, the fold-down lever provides a neat appearance while still offering a smooth & effortless operation.



KEYED & NON-KEYED OPTIONS

Available in either keyed or non-keyed options. Suitable with Doric's DS125, DS126 and DS127 Multi Key wafer cylinders.



SAFE & SECURE

Supplied with a Stainless steel Chain & Sash plate to ensure durability and performance.



PRODUCT DETAILS

FURNITURE MATERIAL	Extruded aluminium body, Zinc & Polesium™ Fold Down Lever Stainless steel Chain & Sash Plate
AVAILABLE FINISHES	Standard & Non-Standard Powder coat colours
CYLINDER	Multi Key Cylinders: DS126 - 6 Disc Wafer Cylinder DS125 - 5 Disc Wafer Cylinder DS127 - C4 Profile Key

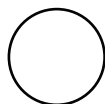
COLOURS



SATIN
BLACK



SILVER



PEARL
WHITE



CUSTOM
COLOURS
AVAILABLE

HOW TO ORDER

CODE	FINISH	CYLINDER
MDN450 Keyed	Powder coat: Black, White, Silver, Non-Standard	DS125 DS126 DS127
MDN451 Non-Keyed	Powder coat: Black, White, Silver, Non-Standard	N/A

TESTING



CYCLE TEST - ICP 002

Functionality test according to
ICP 002: Completed & surpassed



ULTIMATE PULL TEST

Completed and surpassed 5800N



MAXIMUM TORQUE TEST - OPEN

Tested on handle in unlocked and open
position: Completed & surpassed 7.42N



MAXIMUM TORQUE TEST - DEADLOCKED

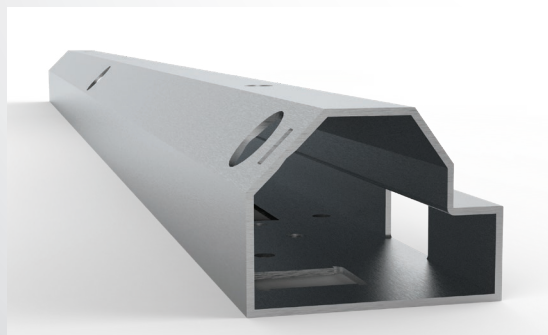
Tested on handle & lockbar in deadlocked
configuration: Completed & surpassed 21.26N

DN450 | MKII TWIN CHAINWINDER



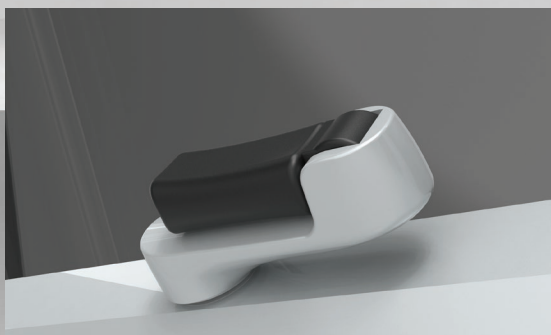
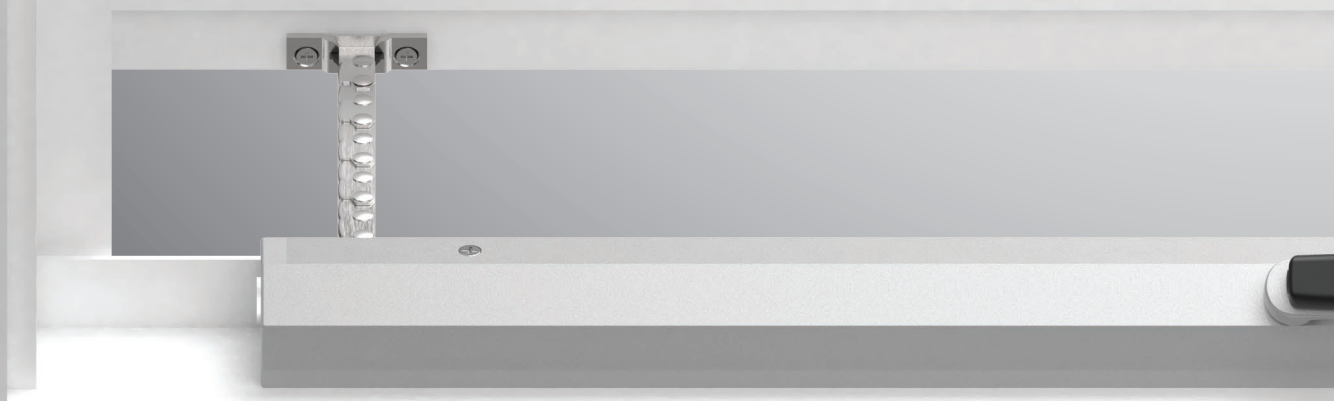
ADJUSTABLE RESTRICTION

Allows for maximum openings, increasing airflow whilst complying with NCC & ICP 005 - The adjustable restriction limits window opening from 110mm to 265mm.



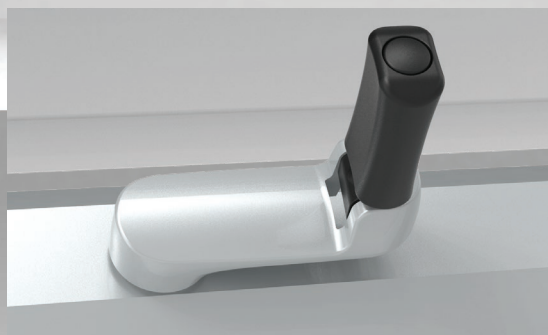
EXTRUDED ALUMINIUM BODY

Offered in standard 690mm length, project lots are available to specified length to match window width for greater architectural styling.



FOLD DOWN HANDLE

Following other Doric chainwinders, the fold-down handle provides a neat appearance while still offering a smooth and effortless operation.



SINGLE LEVER OPERATION

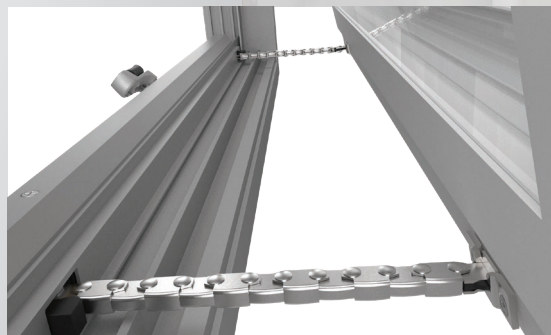
One lever operates both chains simultaneously with ease. The Polesium handle offers unrivalled strength and longevity while also providing a comfortable shaped grip.

THE ULTIMATE, UNRIVALLED & UNMATCHED FOR LARGE AWNING WINDOWS.



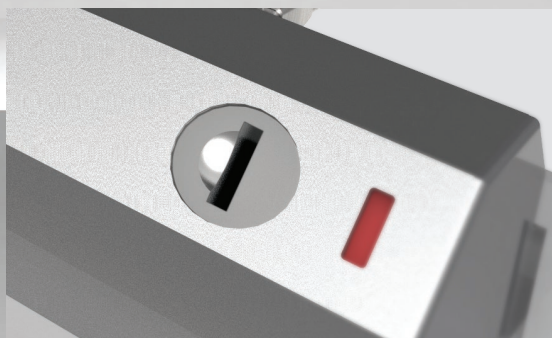
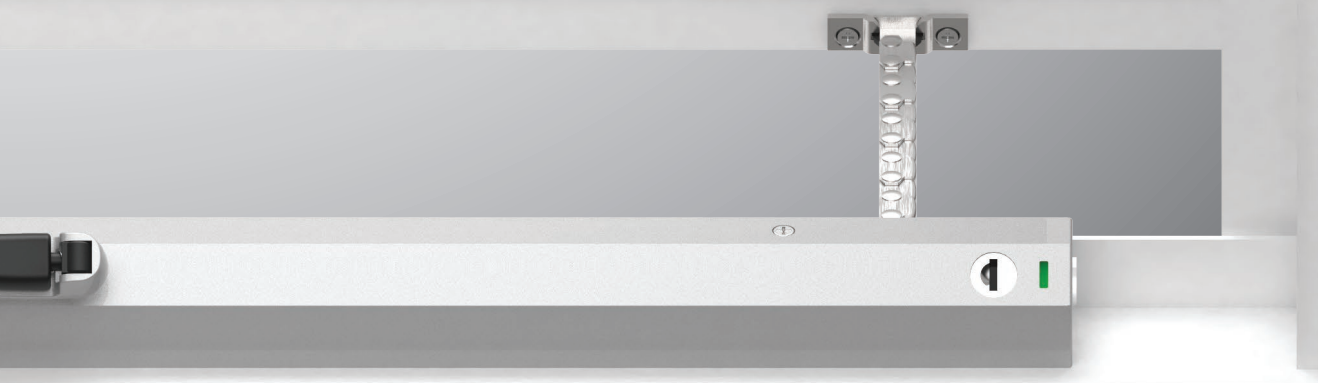
CORROSION RESISTANCE

Designed and manufactured from extruded aluminium alloys, ensures for maximum corrosion resistance to withstand any environment.



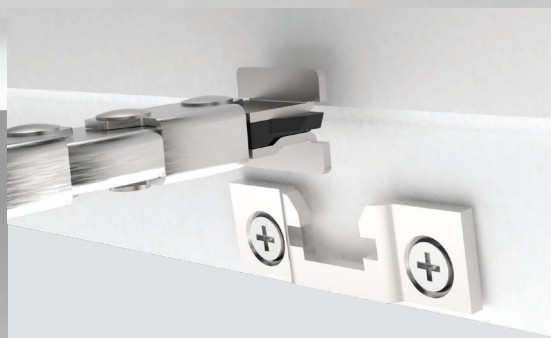
CHAIN PITCHING

Being the largest chainwinder window operator in the market, the DN450 includes a 600mm chain pitching, reducing deflection and increasing window performance.



KEYED & NON-KEYED OPTIONS

Available in either keyed or non-keyed options. Suitable with Doric's DS125, DS126 and DS127 Multi Key wafer cylinders.

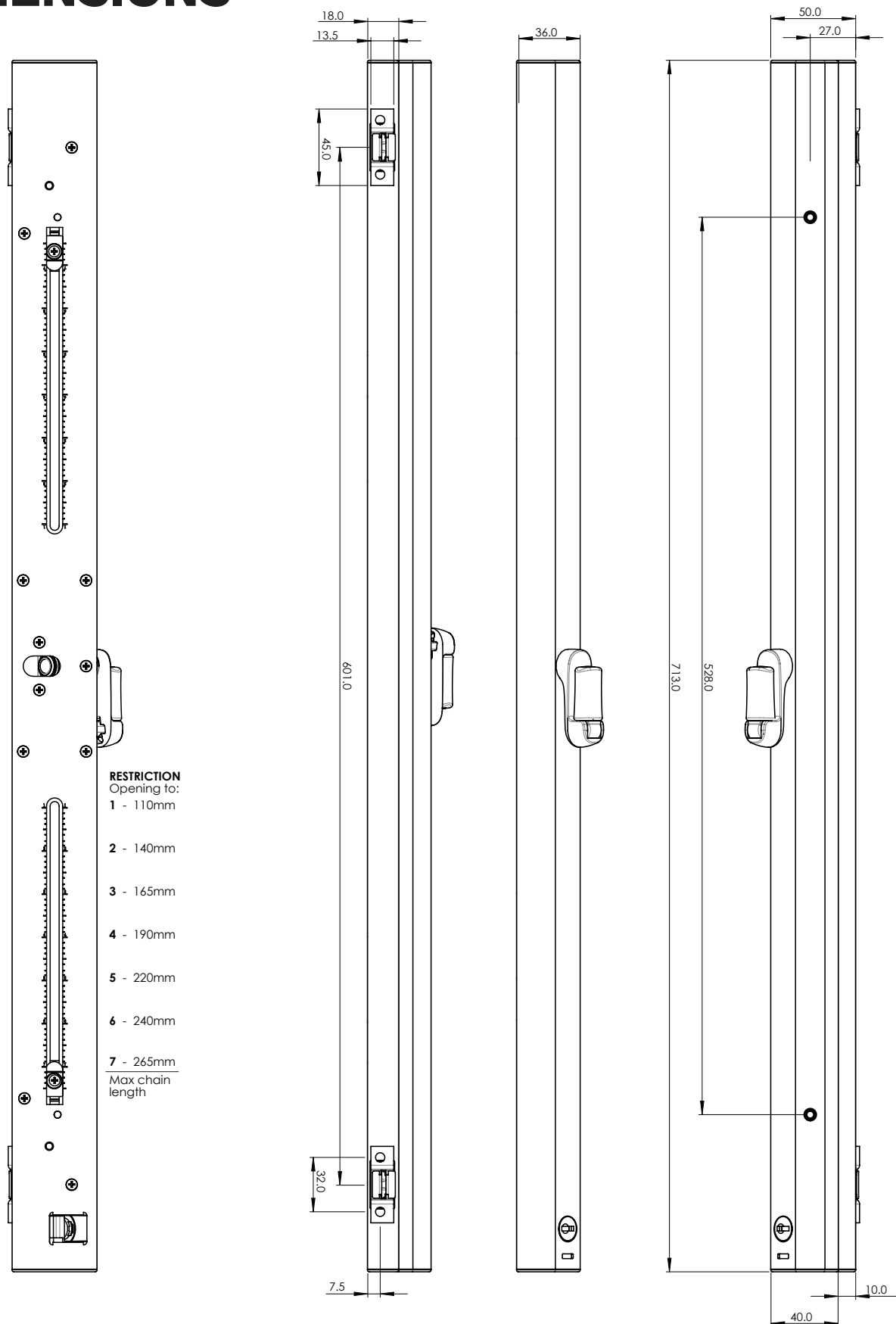


EASY LINK SASH PLATE

Attaching the pitching chain is fast and easy with the Easy Link Sash Plate. Mount the plate brackets and clip-lock in the sash chain.

DN450 | MKII TWIN CHAINWINDER

DIMENSIONS



DORIC | LEADERS IN AWNING WINDOW HARDWARE

DS1 CHAINWINDER

The DS1 is the most durable single chain window winder in the market, complete with innovation.

Designed for residential and commercial settings, the DS1 Chainwinder allows for easy operation, installation, and can be pre-restricted to comply with the NCC and meeting 'Kids Don't Fly' requirements.



Chain and sash plate 'Easy Link' connection - for quick & simple installation time



Smooth, effortless operation and control for large awning openings



Fold down lever with adjustable spline



DS5500 OMEGA WINDOW OPERATOR

Fastest awning operator on the market, with a smooth and effortless operation.

Designed specifically for residential applications, the DS5500 Window Operator is another advanced solution from Doric and is available in 90mm and 150mm arm lengths. Featuring a Push & Pull operation, control takes half the time to open or close an awning window.



90mm restricted 'Kids Don't Fly' compliant



Push button mechanism improves awning window operation



Available in keyed and non-keyed options



VETNUS AUTOMATION ELECTRIC CHAINWINDERS

Doric's Ventus Automation is a powered window control system for residential and commercial applications.

Easy to install, suitable for a wide range of size and weight awning windows. 'Plug & Play' functionality is easily installed and configured.



Retrofit to any opening



No electrician required for installation



Easy to follow quick connect plugs



INNOVATORS

OF HARDWARE FOR WINDOWS AND DOORS

DN450 8P v1.1-16.04.2021

SYDNEY

38 Redfern St,
Wetherill Park
Sydney, NSW 2164
Australia
Ph: +61 2 9609 2555
www.doric.com.au

AUCKLAND

26/C Triton Drive,
Albany, North Shore,
Auckland 0632
New Zealand
Ph: +64 9 415 5535
www.doricnz.co.nz

KUALA LUMPUR

No.17 Jalan 51/203A,
Kawasan Perindustrian Tiong Nam,
Seksyen 51, 46050 Petaling Jaya,
Selangor, Malaysia
Ph: +603 777 33 628
www.doric.com.my



DN450 | **MKII TWIN
CHAINWINDER**