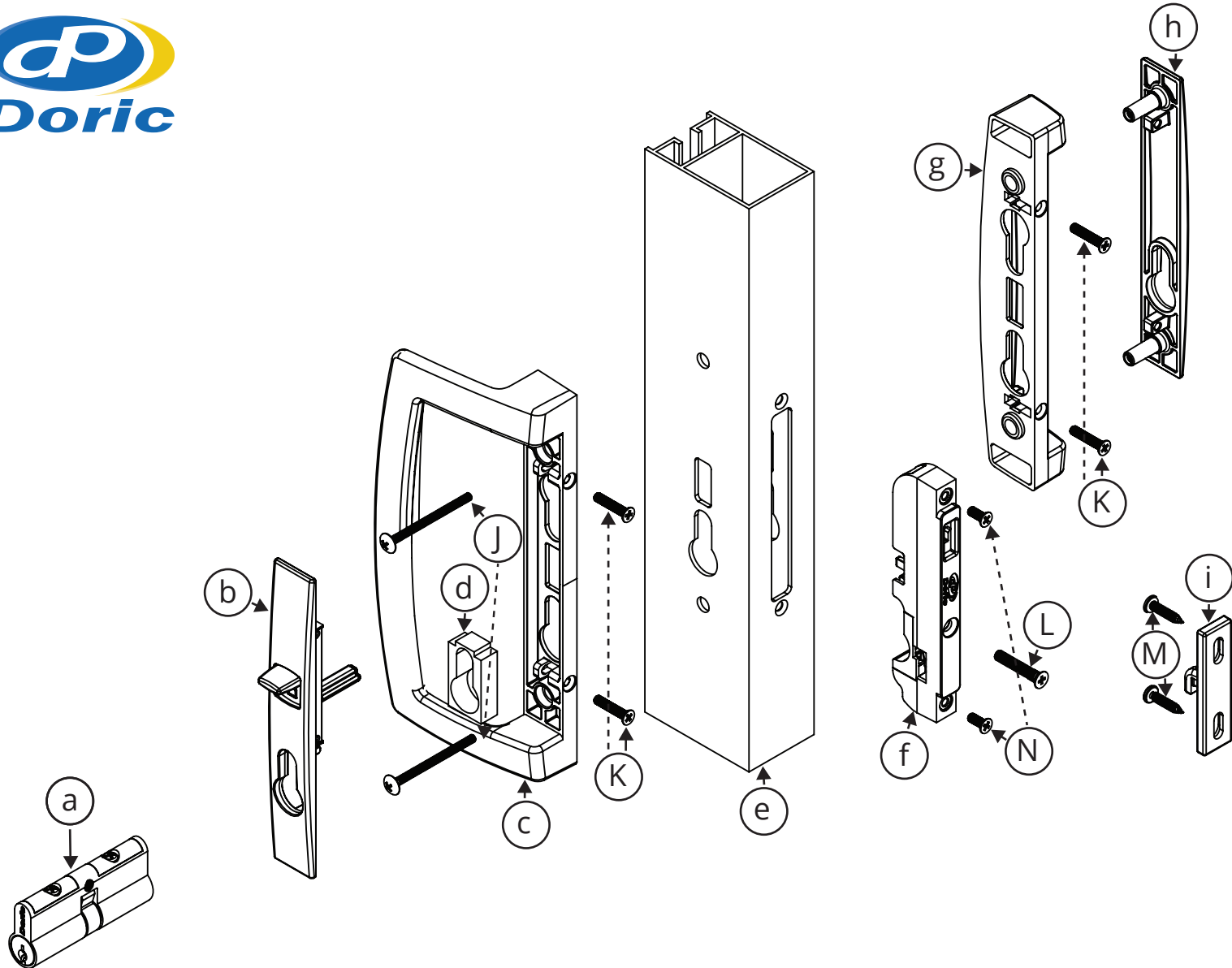


DS2400

Sliding Mortice Lockset

Assembly Instructions



COMPONENTS

- a. Cylinder
- b. Internal Plate
- c. Internal Handle
- d. Foam Cylinder Sleeve
- e. Door
- f. Mortice Lock
- g. External Handle
- h. External Plate
- i. Striker

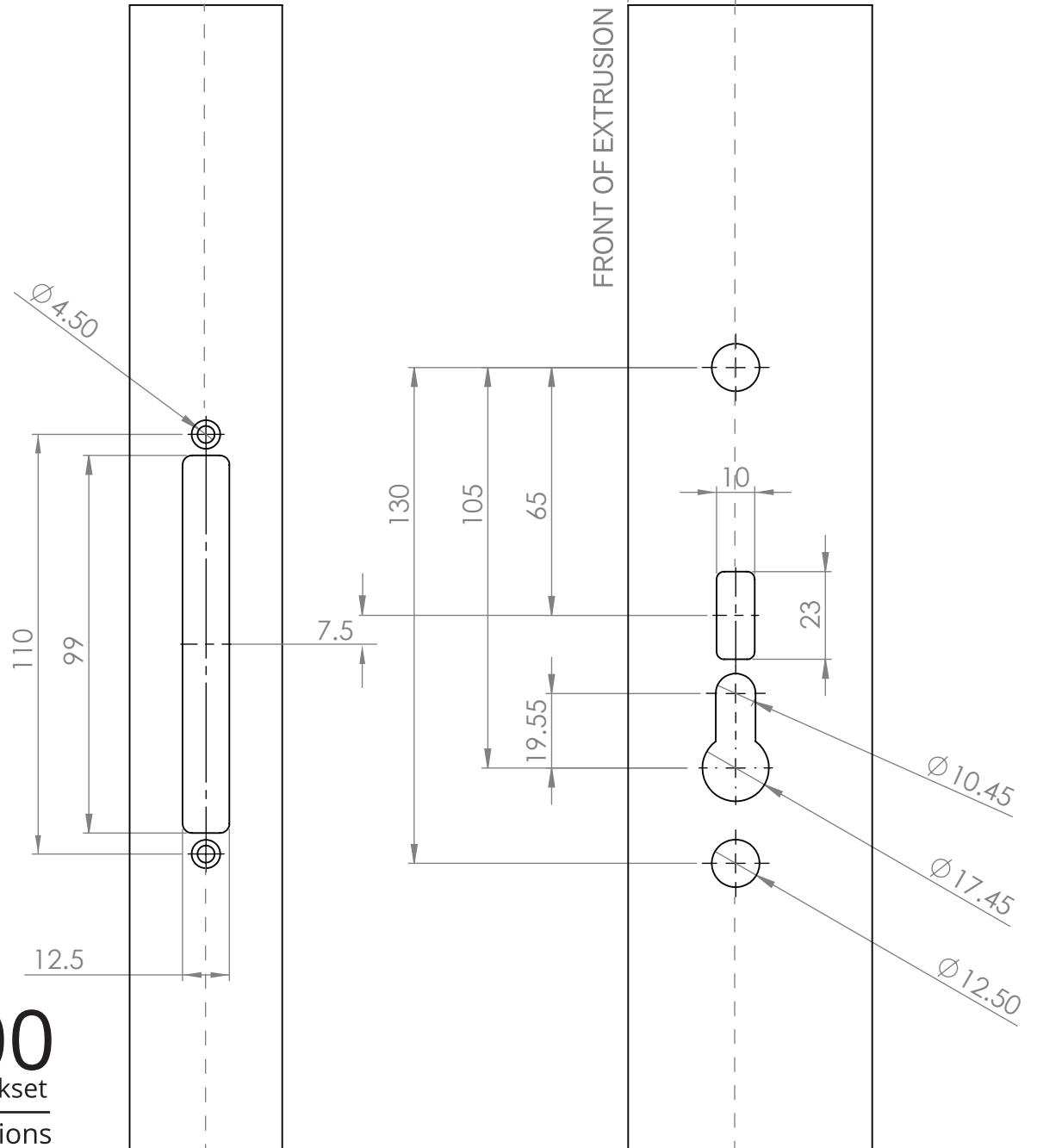
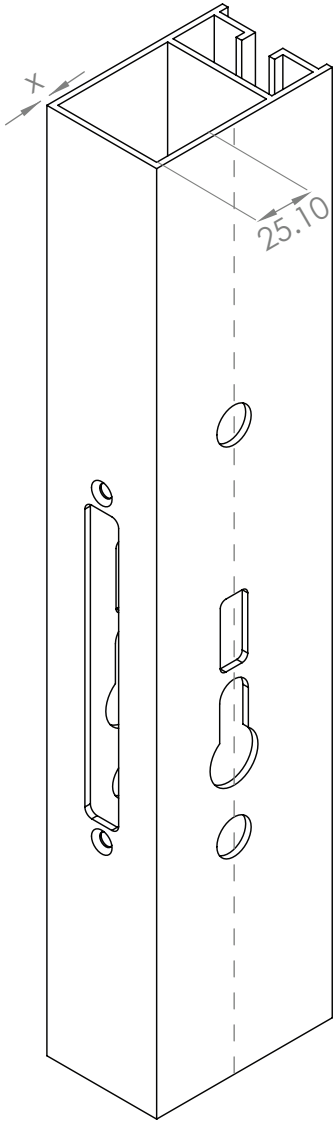
SCREWS

- J. Handle Fixing Screw
- K. Cover Screws
- L. Cylinder Screws
- M. Striker Screws
- N. Mortice Lock Screws

COMPONENTS

INSTRUCTIONS

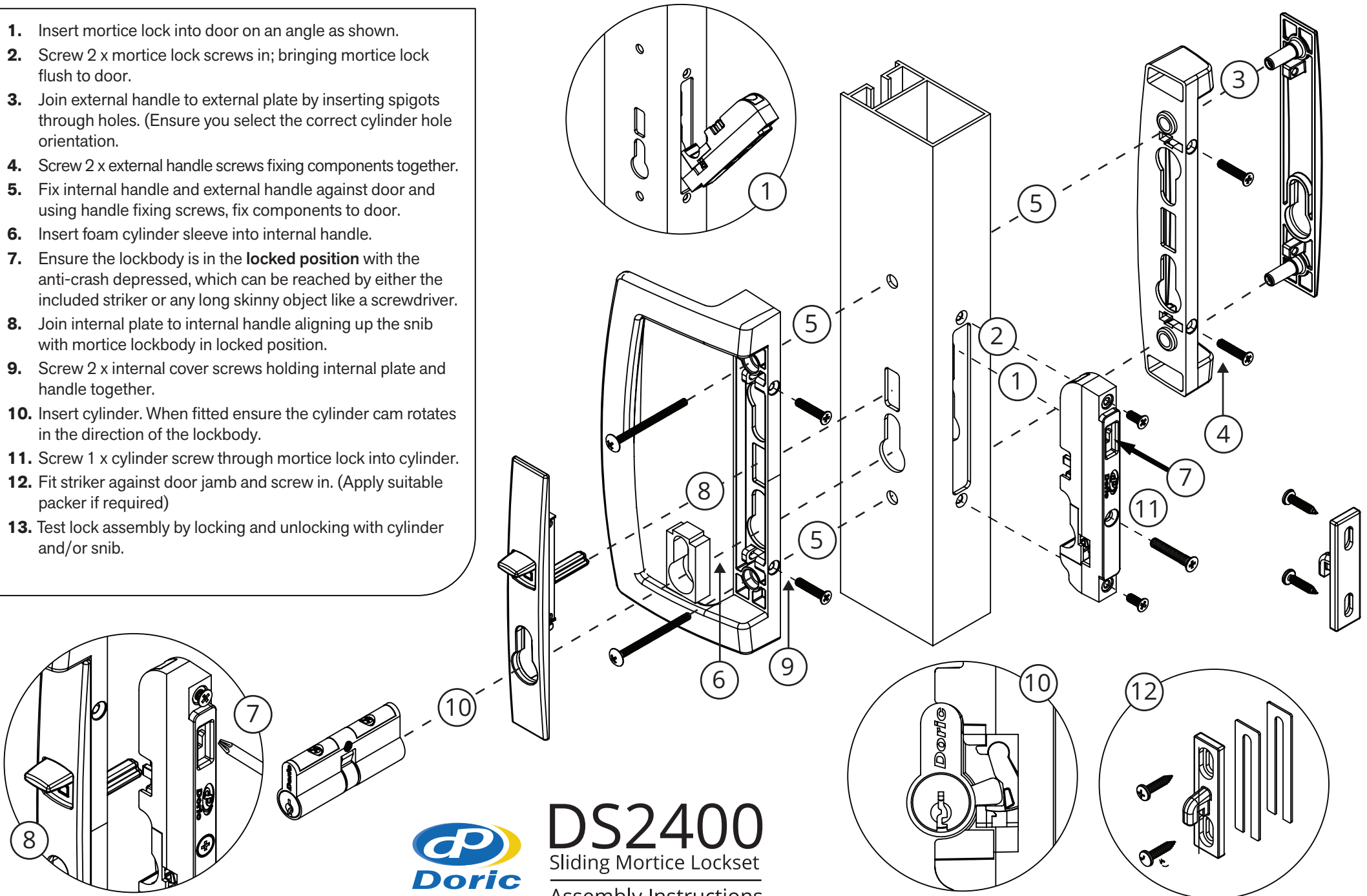
Prepare door as per below



DS2400
Sliding Mortice Lockset
Assembly Instructions

INSTRUCTIONS

1. Insert mortice lock into door on an angle as shown.
2. Screw 2 x mortice lock screws in; bringing mortice lock flush to door.
3. Join external handle to external plate by inserting spigots through holes. (Ensure you select the correct cylinder hole orientation).
4. Screw 2 x external handle screws fixing components together.
5. Fix internal handle and external handle against door and using handle fixing screws, fix components to door.
6. Insert foam cylinder sleeve into internal handle.
7. Ensure the lockbody is in the **locked position** with the anti-crash depressed, which can be reached by either the included striker or any long skinny object like a screwdriver.
8. Join internal plate to internal handle aligning up the snib with mortice lockbody in locked position.
9. Screw 2 x internal cover screws holding internal plate and handle together.
10. Insert cylinder. When fitted ensure the cylinder cam rotates in the direction of the lockbody.
11. Screw 1 x cylinder screw through mortice lock into cylinder.
12. Fit striker against door jamb and screw in. (Apply suitable packer if required)
13. Test lock assembly by locking and unlocking with cylinder and/or snib.



DS2400
Sliding Mortice Lockset
Assembly Instructions