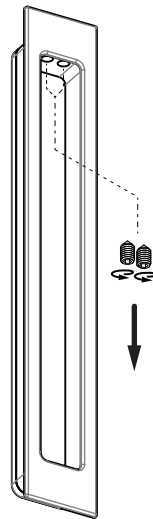


DS578  
Aluminium

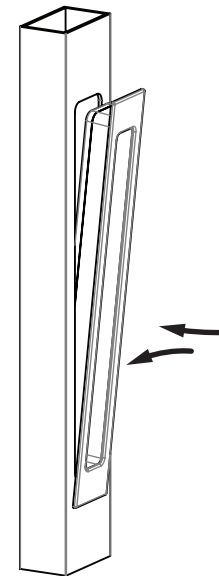
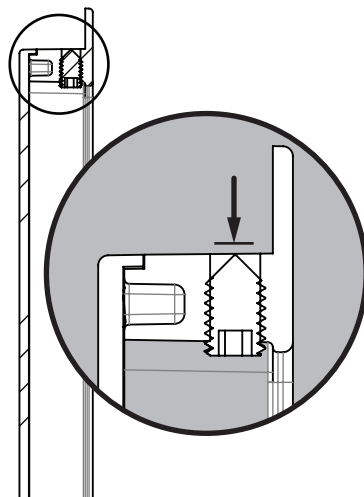
x Specified by Window  
Manufacturer  
(maybe referred to  
as "backset")

**CUT OUT DETAILS**



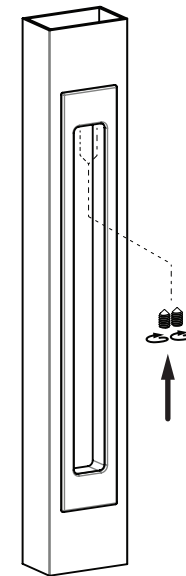
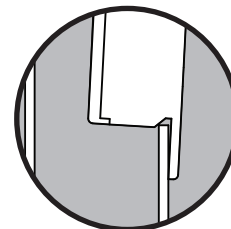
**1.** Ensure that the point of the grub screw is not protruding

Use a standard 3mm hex head allen key to unwind if necessary



**2.** Angle the flush pull and lower the side with the wedge into the cutout.  
*N.B The grub screw should be positioned on the top*

Pivot the top end in until the face plate rests flush on the extrusion.



**3.** Fasten the flush pull in place using a standard 3mm hex head Allen key.

