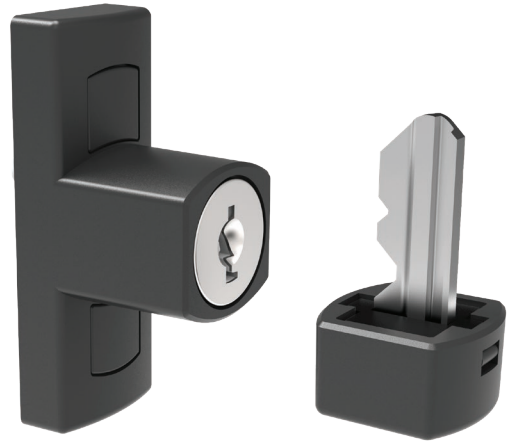




# LOUVRE LOC



**The Ventus Louvre Loc offers a convenient, easy to use method in securing your louvres when in the closed position.**

It works just like a window, the Louvre Loc lets you close then lock the louvres for security and peace of mind. Louvre Loc is available for 152mm Series & 102mm Series of Ventus Louvre Systems.

Designed in Australia by Doric, the Louvre Loc fits within the existing ventus louvre system without any modifications other than drilling the channel for mounting the lock.

## ADVANTAGES



Easy to use - a simple turn of the snib key secures the louvres when shut.



Removable Snib - Unique Australian design turns the snib lock into a removable key for added security.



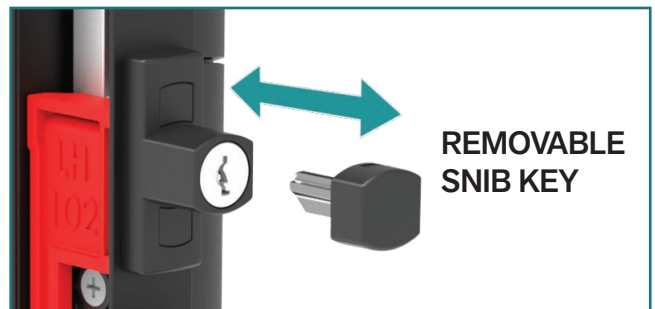
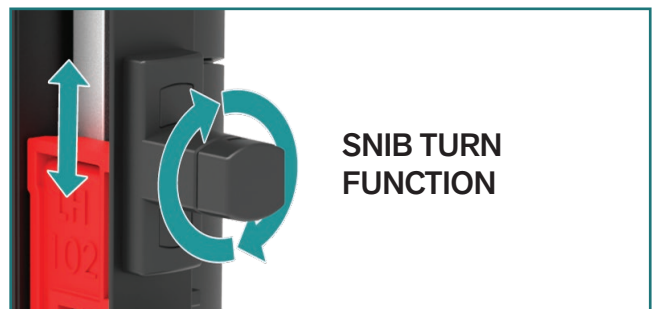
Key Compatibility - Operates with Snib Key or Doric C4 key profile.



Smart innovative design - An Australian design lead by Dorics R&D team assuring the highest quality and standards.



Colour matched to channels - when ordered together with louvre galleries.



## COLOUR OPTIONS



Black



Silver



White



Monument

## 102mm SERIES LOUVRE LOC

For the 102mm Series Louvre the Louvre Loc is fitted above the handle. When engaged, the locking arm slides down to obstruct and lock the handle.



### COMPATIBLE HANDLES:

- Standard
- Low Profile



**GALLERY CLOSED**  
LOCKED POSITION  
SNIB KEY IN



**GALLERY CLOSED**  
UNLOCKED POSITION  
SNIB KEY OUT



**GALLERY OPEN**  
UNLOCKED POSITION  
SNIB KEY IN

## 152mm SERIES LOUVRE LOC

The 152mm Series Louvre, the Louvre Lock is located below the louvre handle, operating the red locking arm inside the channel that slides up to obstruct and lock the handle in place.



### COMPATIBLE HANDLES:

- Standard
- Ring Pull
- Low Profile
- Dual Handle



**GALLERY CLOSED**  
LOCKED POSITION  
SNIB KEY IN



**GALLERY CLOSED**  
UNLOCKED POSITION  
SNIB KEY OUT



**GALLERY OPEN**  
UNLOCKED POSITION  
SNIB KEY IN

# INNOVATORS

OF HARDWARE FOR WINDOWS AND DOORS

---

VENTUS\_LOUVRE\_LOC\_2021 v1.4 - 21.10.2021

## SYDNEY

38 Redfern St,  
Wetherill Park  
Sydney, NSW 2164  
Australia  
Ph: +61 2 9609 2555  
[www.doric.com.au](http://www.doric.com.au)

## AUCKLAND

26/C Triton Drive,  
Albany, North Shore,  
Auckland 0632  
New Zealand  
Ph: +64 9 415 5535  
[www.doric.co.nz](http://www.doric.co.nz)

## KUALA LUMPUR

No.17 Jalan 51/203A,  
Kawasan Perindustrian Tiong Nam,  
Seksyen 51, 46050 Petaling Jaya,  
Selangor, Malaysia  
Ph: +603 777 33 628  
[www.doric.com.my](http://www.doric.com.my)



**ALCHIN  
LONG  
GROUP**



# LOUVRE LOC