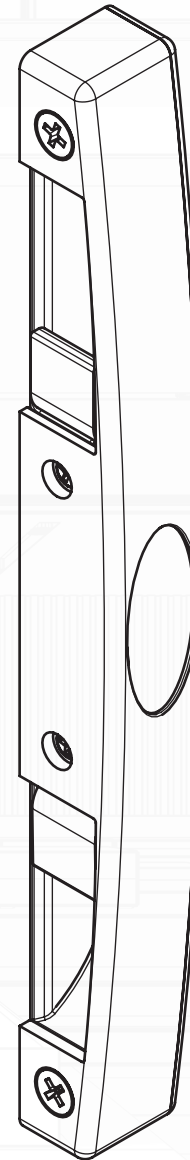


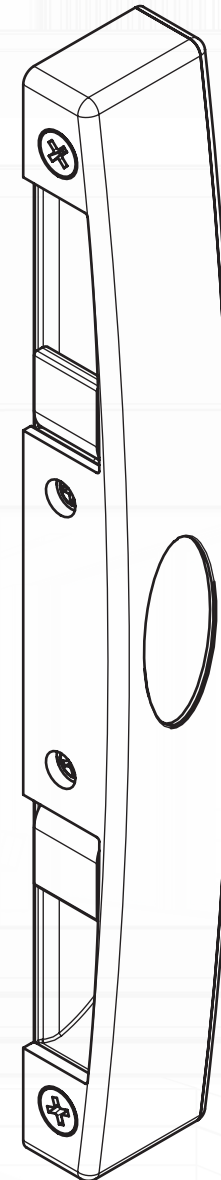


INSTALLATION GUIDE

DS2006



DS2006W



**DS2006
DS2006W**

v1.1 - 10/12/2021

**SLIDING DOOR
KEEPER**

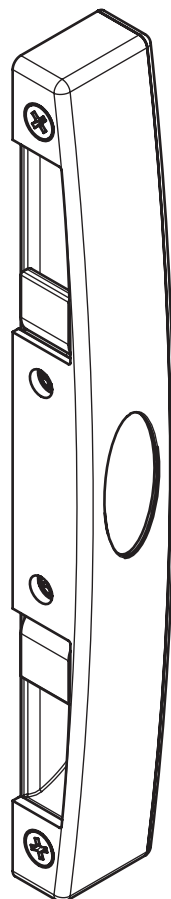
Head office:
38 Redfern St
Wetherill Park NSW 2164
Australia

Ph: 1300 132 389
Fax: 1300 652 292
sales@doric.com.au
www.doric.com.au

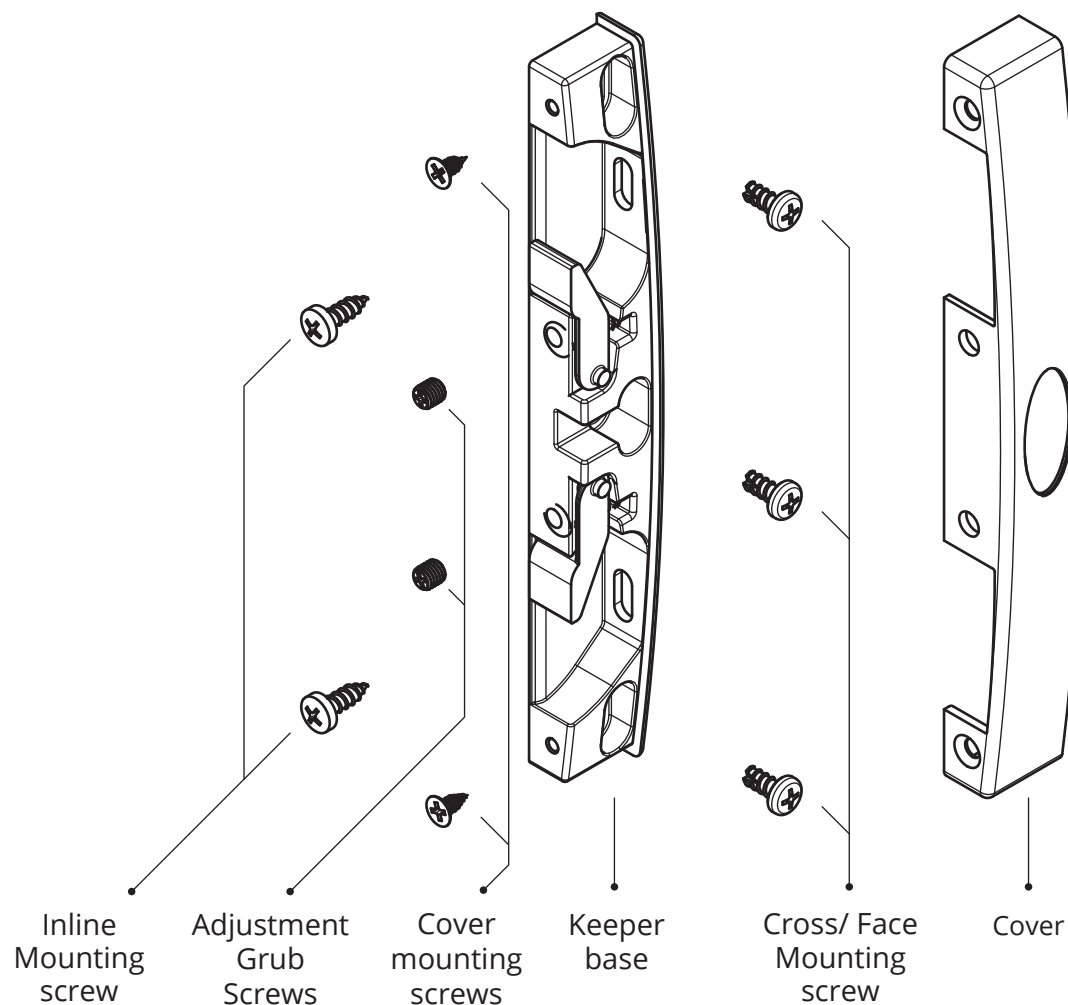


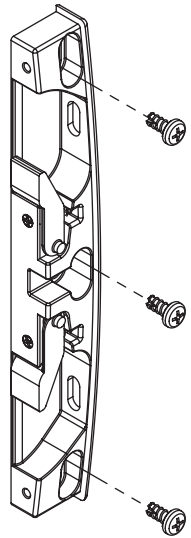


DS2006



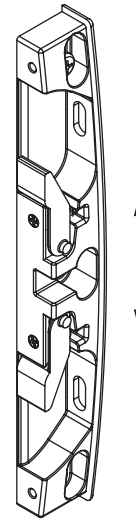
DS2006W





1. Placing Keeper

Install the Keeper base, secured loosely in the Cross/ Face fixing holes using the mounting screws provided.
Do not tighten the screws yet.

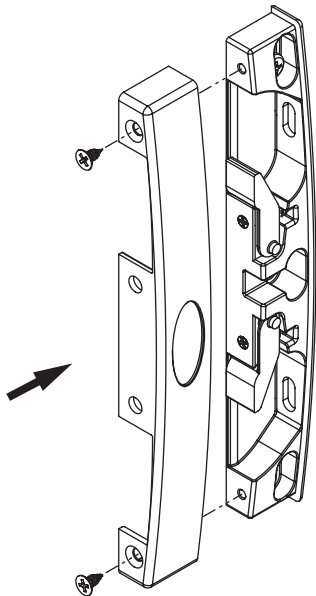
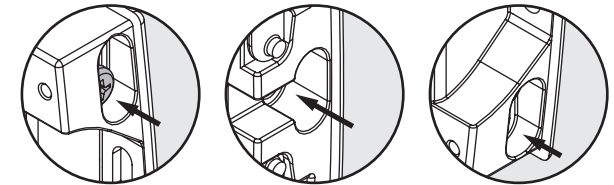


2. Vertical Adjustment

Adjust the Keeper base vertically until the correct position is found in relation to the door lock.

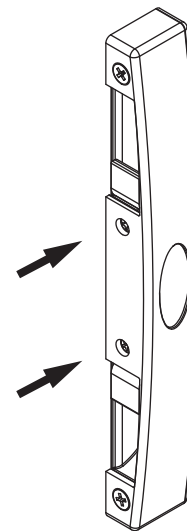
The keeper base offers adjustment up to 9mm

Now tighten the mounting screws.



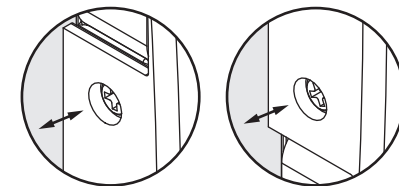
3. Fitting Cover

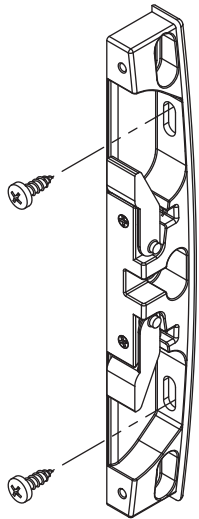
Install the Keeper cover using the screws provided.



4. Horizontal Adjustments

Up to 6mm horizontal adjustment can be achieved using top and bottom screws as shown

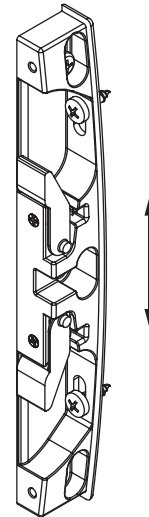




1. Placing Keeper

Install the Keeper base, secured loosely in the Inline fixing holes using the mounting screws provided.

Do not tighten the screws yet.

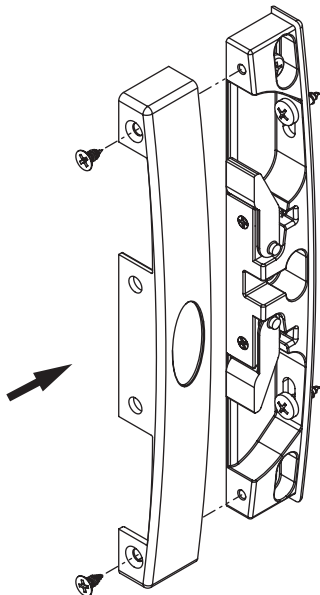
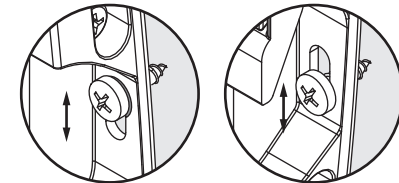


2. Vertical Adjustment

Adjust the Keeper base vertically until the correct position is found in relation to the door lock.

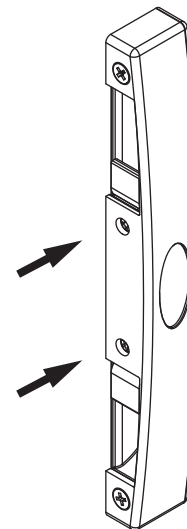
The keeper base offers adjustment up to 9mm

Now tighten the mounting screws.



3. Fitting Cover

Install the Keeper cover using the screws provided.



4. Horizontal Adjustments

Up to 6mm horizontal adjustment can be achieved using top and bottom screws as shown

