



---

# CYLINDERS | HARDWARE & ACCESSORIES

# EPEC | ELECTRONIC PIN EURO CYLINDER

## UPGRADE TO A **COMPACT DIGITAL LOCK** WITHOUT CHANGING YOUR **EXISTING HARDWARE**

Designed to fit the existing Euro cylinder profile the EPEC is compatible with fixed and floating cam lockbodies to add a multi-user digital-key & turn operation to new and existing door lock hardware.



### **MULTI-USER KEYLESS ENTRY**

Program and manage up to 12 unique user codes across 2 groups.



### **WEATHERPROOF**

IP55 rated against rain, hail, snow and dust.



### **LONG BATTERY LIFE**

Up to 3 years or 9,000 operations.  
Easy to change CR2 battery.



### **DEADLOCKING COMPLIANT**

Works with deadlocking lockbodies offering higher level security.



Find out more:  
[doric.com.au/epec](http://doric.com.au/epec)

**AUSTRALIA'S BEST  
& BIGGEST RANGE  
OF WINDOW AND  
DOOR HARDWARE**

For sales & information:  
[sales@doric.com.au](mailto:sales@doric.com.au)  
1300 132 389  
[www.doric.com.au](http://www.doric.com.au)



# CYLINDERS BARRELS & KEYS



## **SURFACE MOUNTED SLIDING PATIO CYLINDERS**

DS154   6 Disc Cylinder Set	<b>4</b>
DS155   5 Pin Cylinder Set	<b>5</b>

## **WINDOW LOCK CYLINDERS**

DS123   5 Disc Cylinder	<b>6</b>
DS124   6 Disc Cylinder	<b>6</b>
DS125   5 Disc Cylinder	<b>7</b>
DS126   6 Disc Cylinder	<b>7</b>
DS127   Multi-Key Cylinder	<b>8</b>
DS128   Multi-Key Cylinder	<b>8</b>

## **EURO HALF CYLINDER**

DS250   Euro 5 Pin Half Cylinder	<b>9</b>
----------------------------------	----------

## **EURO CYLINDERS FIXED CAM**

DS1272   Euro 62mm 5 Pin Cylinder	<b>10</b>
DS1266   Euro 62mm 5 Pin Cylinder/Turn	<b>10</b>
DS197   Euro 70mm 5 Pin Cylinder	<b>11</b>
DS202   Euro 70mm 5 Pin Cylinder/Turn	<b>11</b>

## **EURO CYLINDERS LAZY/ FLOATING CAM**

DS196NSK   Euro 62mm 5 Pin Cylinder	<b>12</b>
DS198   Euro 46mm 6 Disc Cylinder	<b>12</b>
DS200NSK   Euro 70mm 5 Pin Cylinder	<b>13</b>
DS211NSK   Euro 80mm 5 Pin Cylinder	<b>13</b>

## **ELECTRONIC CYLINDERS**

EPEC   Electronic PIN Euro Cylinder	<b>14</b>
-------------------------------------	-----------

## CYLINDERS | SURFACE MOUNTED SLIDING PATIO

### DS154 | 6 DISC CYLINDER SET

APPLICATION	Surface mounted patio sliding door locks, excluding DS3000 Series
CONSISTS	DS94 Cylinder; DS173 Cylinder; External cylinder shroud; 2 Keys
KEYING	#270**- Includes 2 keys
ORDER CODE	MDS154 /(key#)



### DS94 | 6 DISC CYLINDER INTERNAL

APPLICATION	Suits internal surface mounted sliding door handles <i>Sold only as part of DS154 Set</i>
MATERIAL	Zinc & Brass
FINISH	Bright Chrome
KEYING	#270**



### DS173 | 6 DISC CYLINDER EXTERNAL

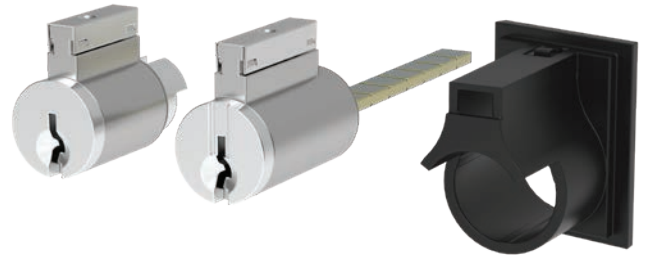
APPLICATION	Suits external surface mounted sliding door handles Includes dockable tailbar <i>Sold only as part of DS154 Set</i>
MATERIAL	Zinc & Brass Nylon (Housing)
FINISH	Bright Chrome
KEYING	#270**



## CYLINDERS | SURFACE MOUNTED SLIDING PATIO

### DS155 | 5 PIN CYLINDER SET – C4 BROACH

APPLICATION	Suits all surface mounted sliding door handles
CONSISTS	DS187 Cylinder; DS188 Cylinder; DS83 Cylinder Shroud; 2 Keys
KEYING	#960** - Includes 2 keys
ORDER CODE	MDS155 /(key#)



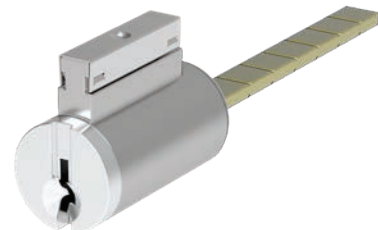
### DS187 | 5 PIN CYLINDER INTERNAL

APPLICATION	Suits internal surface mounted sliding door handles <i>Sold only as part of DS155 Set</i>
MATERIAL	Zinc & Brass
FINISH	Bright Chrome
KEYING	#960**



### DS188 | 5 PIN CYLINDER EXTERNAL

APPLICATION	Suits external surface mounted sliding door handles Includes dockable tailbar <i>Sold only as part of DS155 Set</i> <i>Requires DS83 Cylinder Shroud</i>
MATERIAL	Zinc & Brass
FINISH	Bright Chrome
KEYING	#960**



### DS83 | CYLINDER SHROUD

APPLICATION	<i>For use with DS188</i>
MATERIAL	Nylon



## CYLINDERS | WINDOWS LOCKS

### DS123 | 5 DISC CYLINDER SET

APPLICATION	Included in Doric sliding and double hung window lock hardware.
MATERIAL	Zinc & Brass
FINISHES	Bright Chrome
KEYING	#926** - Includes key
ORDER CODE	MDS123 /(key#)



### DS124 | 6 DISC CYLINDER SET

APPLICATION	Included in Doric sliding, casement and double hung window lock hardware.
MATERIAL	Zinc & Brass
FINISHES	Bright Chrome
KEYING	#270** - Includes key
ORDER CODE	MDS124 /(key#)



## CYLINDERS | WINDOWS LOCKS

### DS125 | 5 DISC CYLINDER SET

APPLICATION	Included in Doric window locks, ventlocks, door bolts and chainwinders.
MATERIAL	Zinc & Brass
FINISHES	Bright Chrome
KEYING	#926** - Includes key
ORDER CODE	MDS125 /(key#)



### DS126 | 6 DISC CYLINDER SET

APPLICATION	Included in Doric window locks, ventlocks, door bolts and chainwinders.
MATERIAL	Zinc & Brass
FINISHES	Bright Chrome
KEYING	#270** - Includes key
ORDER CODE	MDS126 /(key#)





## CYLINDERS | WINDOWS LOCKS

### DS127 | STD PIP MULTI-KEY CYLINDER

APPLICATION	Included in Doric window locks, ventlocks, door bolts and chainwinders. Not for individual sale.
MATERIAL	Zinc & Brass
FINISHES	Bright Chrome
KEYING	Accepts multiple C4 keyways. No key supplied.
ORDER CODE	MDS127



---

### DS128 | HALF MOON MULTI-KEY CYLINDER

APPLICATION	Included in Doric window locks, ventlocks, door bolts. Not for individual sale.
MATERIAL	Zinc & Brass
FINISHES	Bright Chrome
KEYING	Accepts multiple C4 keyways. No key supplied.
ORDER CODE	MDS128

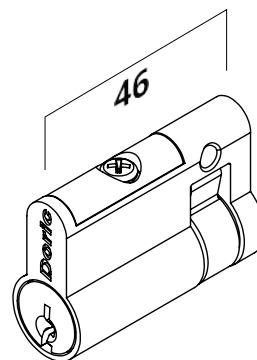




## CYLINDERS | EURO HALF CYLINDER

### DS250 | EURO 5 PIN HALF CYLINDER - C4 KEYWAY

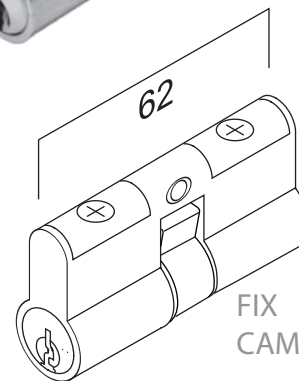
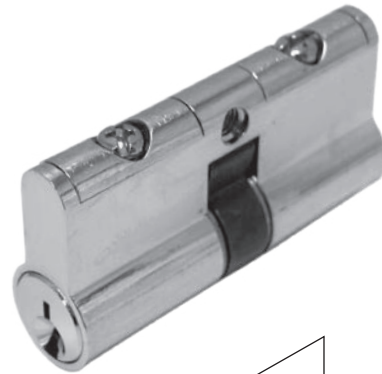
APPLICATION	Evolution Series Sliding Door Locks, DS2400 Sliding Door Locks One sided key access
MATERIAL	Zinc/Brass
FINISHES	Chrome plated
CAM	Fixed
FIXINGS	M5 x 30mm (Included)
KEYING	#960**
ORDER CODE	MDS250 /(key#)



## CYLINDERS | EURO CYLINDERS FIXED CAM

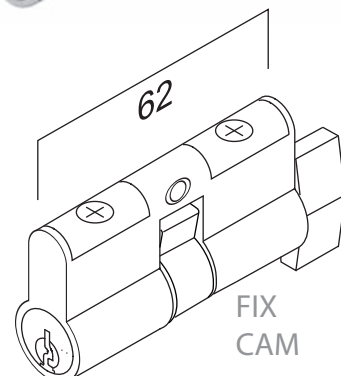
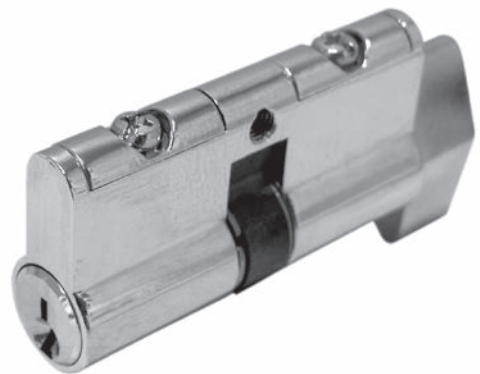
### DS1272 | EURO 62MM 5 PIN CYLINDER - C4 KEYWAY

APPLICATION	French Door Furniture; Evolution Series Sliding Door Lock
MATERIAL	Zinc & Brass
FINISHES	Satin Chrome
CAM	Fixed
FIXINGS	M5 (not included)
KEYING	#960** - Includes 2 keys
ORDER CODE	MDS1272 /(key#)



### DS1266 | EURO 62MM 5 PIN CYLINDER/TURN - C4 KEYWAY

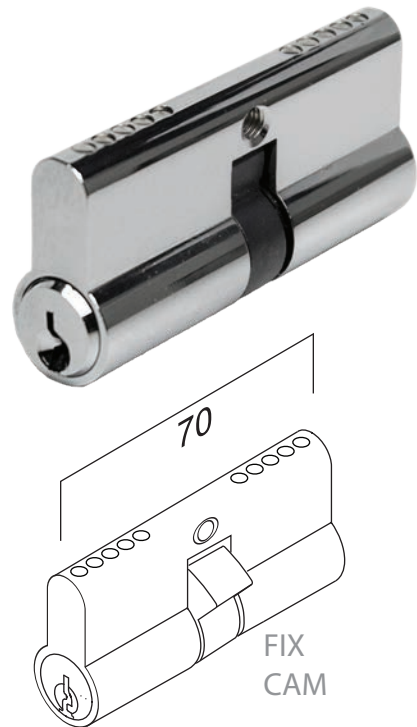
APPLICATION	French Door Furniture; Evolution Series Sliding Door Lock
MATERIAL	Zinc & Brass
FINISHES	Satin Chrome
CAM	Fixed
FIXINGS	M5 (not included)
KEYING	#960** - Includes 2 keys
ORDER CODE	MDS1266 /(key#)



## CYLINDERS | EURO CYLINDERS FIXED CAM

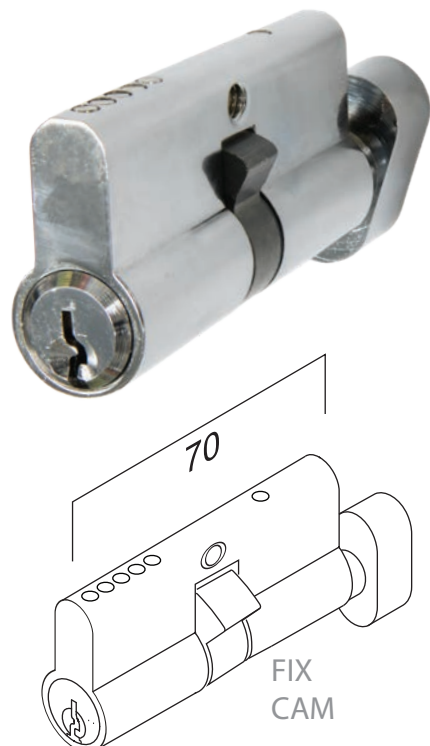
### DS197 | EURO 70MM 5 PIN CYLINDER - C4 KEYWAY

APPLICATION	French Door Furniture; Evolution Series Sliding Door Lock
MATERIAL	Zinc & Brass
FINISHES	Satin Chrome
CAM	Fixed
FIXINGS	M5 x 30mm (Included)
KEYING	#960** - Includes 2 keys
ORDER CODE	MDS197 /(key#)



### DS202 | EURO 70MM 5 PIN CYLINDER/TURN - C4 KEYWAY

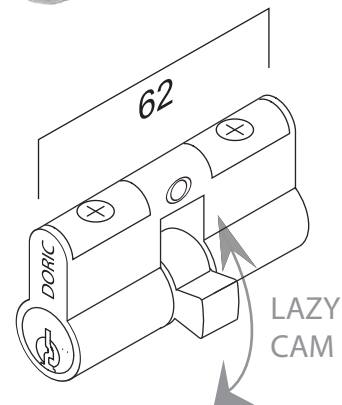
APPLICATION	French Door Furniture; Evolution Series Sliding Door Lock
MATERIAL	Zinc & Brass
FINISHES	Satin Chrome
CAM	Fixed
FIXINGS	M5 x 30mm (Included)
KEYING	#960** - Includes 2 keys
ORDER CODE	MDS202 /(key#)



## CYLINDERS | EURO CYLINDERS LAZY/ FLOATING CAM

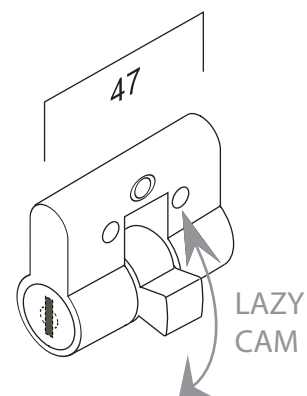
### DS196NSK | EURO 62MM 5 PIN CYLINDER WITH SPECIAL FUNCTION CAM - C4 KEYWAY

APPLICATION	Sliding and hinged door security door locks; DS2400 Series Sliding Door Lock
MATERIAL	Zinc & Brass
FINISHES	Chrome plated
CAM	Lazy/Floating
FIXINGS	M5 x 30mm (Included)
KEYING	#960 ** - Includes 2 keys
ORDER CODE	MDS196NSK /(key#)



### DS198 | EURO 46MM 6 DISC CYLINDER - C4 KEYWAY

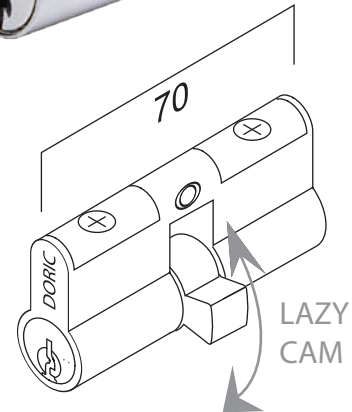
APPLICATION	Suits all sliding and swing door security locks
MATERIAL	Zinc & Brass
FINISHES	Chrome plated
CAM	Lazy/Floating
FIXINGS	M5 (Not included)
KEYING	#270 ** - Includes 2 keys
ORDER CODE	MDS198 /(key#)



## CYLINDERS | EURO CYLINDERS LAZY/ FLOATING CAM

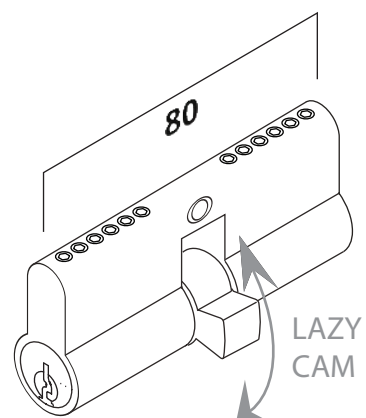
### DS200NSK | EURO 70MM 5 PIN CYLINDER - C4 KEYWAY

<b>APPLICATION</b>	Sliding and hinged door security door locks; DS2400 Series Sliding Door Lock
<b>MATERIAL</b>	Zinc & Brass
<b>FINISHES</b>	Chrome plated
<b>CAM</b>	Lazy/Floating
<b>FIXINGS</b>	M5 x 30mm (Included)
<b>KEYING</b>	#960** - Includes 2 keys
<b>ORDER CODE</b>	MDS200NSK /(key#)



### DS211NSK | EURO 80MM 5 PIN CYLINDER - C4 KEYWAY

<b>APPLICATION</b>	Suits all Euro-profile lockbodies for sliding and swing doors and security locks
<b>MATERIAL</b>	Zinc & Brass
<b>FINISHES</b>	Chrome plated
<b>CAM</b>	Lazy/Floating
<b>FIXINGS</b>	M5 x 30mm (Included)
<b>KEYING</b>	#960** - Includes 2 keys
<b>ORDER CODE</b>	MDS211NSK /(key#)



# EPEC | ELECTRONIC PIN EURO CYLINDER

The Electronic PIN Euro Cylinder (EPEC) provides a multi-user PIN code functionality & management for Euro Cylinder lockbodies. EPEC is designed to fit the existing Euro Cylinder profile working with both fixed or floating cam lockbodies opening up greater choices of designs in handle furniture and lock body, effectively adding a digital-key & turn operation to off the shelf door hardware.

The EPEC allows you to create and manage up to two groups and 12 unique PIN codes; you'll never have to worry about losing a key again.



## ADVANTAGES

- **KEYLESS ENTRY** - Enter a 6 digit PIN Code which acts as a digital key and, rotate to unlock/lock.
- **LOCK CYLINDER UPGRADE KIT** - Designed to quickly and easily upgrade any existing Euro Cylinder lockbody. Can replace either fixed and floating cam locks.
- **MULTI-ORIENTATED** - PIN pad always positions #1 as the top left PIN location.
- **MULTI-GROUP ACCESS CONTROL** - Provides complete access control allowing up to 2 groups, 12 unique user codes, and limited temporary codes for trades and visitors.
- **TOUGH AND SECURE** - Stainless steel 316 Actuators and Anti Drill Plate for tamper protection. Highest security standards against software attack.
- **LONG BATTERY LIFE** - Up to 3 years and 9,000 operations. Easy to change CR2 battery and low battery warning with Micro USB connection for backup power.
- **WEATHERPROOF** - IP55 rated against rain, hail, snow and dust.
- **DEADLOCKING AND SNIB MODE** - Deadlocking level security. Programmable internal snib operation via keypad.

## PRODUCT DETAILS

MATERIAL	Stainless steel, brass and zinc construction
FINISH AVAILABLE	Satin Black Satin Chrome
SUITS	Standard Euro cylinder profile lock bodies
AVAILABLE SIZES	62mm Cylinder body 70mm Cylinder body
APPLICATIONS	Front & Rear Entry Doors French Hinged Doors Sliding Doors Hinged Doors Security Doors

## COLOURS



SATIN  
SILVER



SATIN  
BLACK

## TESTING

- Cycle Testing
- Battery Life Cycle Testing
- Ingress Protection Testing (IP55)
- Penetration Testing
- Salt Bath Testing
- Ultimate Testing
- Software Testing

## HOW TO ORDER

CODE	FINISH	LENGTH
MDEPEC62SC	Satin Chrome	62mm
MDEPEC62SB	Satin Black	62mm

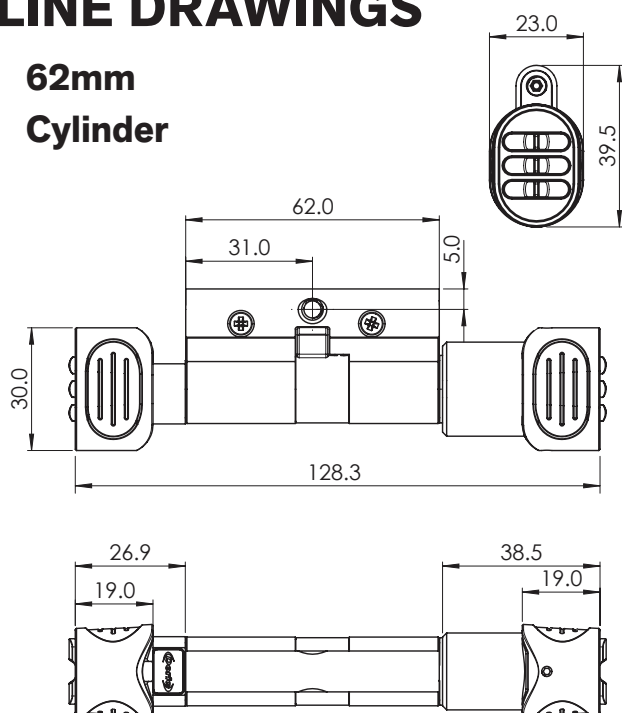
CODE	FINISH	LENGTH
MDEPEC70SC	Satin Chrome	70mm
MDEPEC70SB	Satin Black	70mm



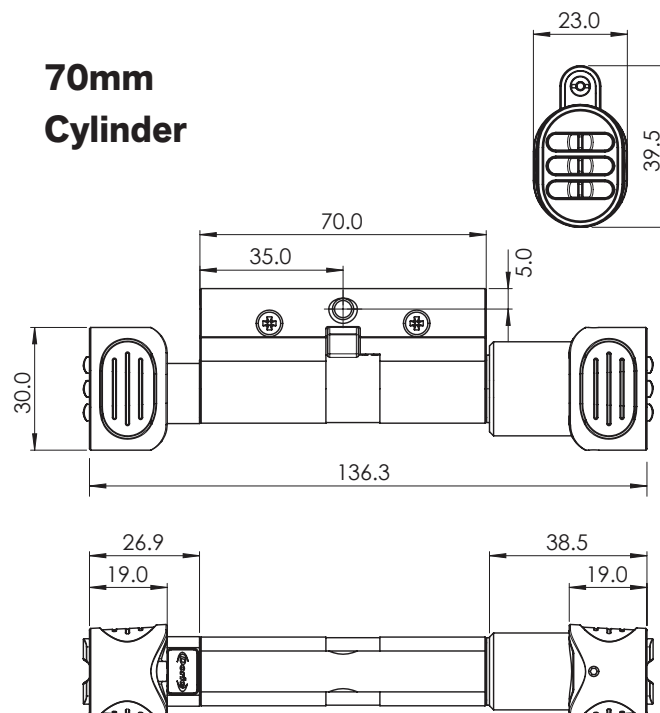


## LINE DRAWINGS

### 62mm Cylinder



### 70mm Cylinder



## RECOMMENDED HARDWARE

EPEC can be used in conjunction with these following Doric hardware:



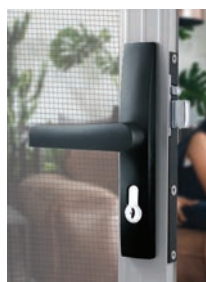
**DS2400**  
Sliding Mortice  
Lock



**DS1500**  
Hinged Door  
Lock



**DS1600**  
Hinged Door  
Lock



**DS2075**  
Hinged Barrier  
Door Lock



**DS1400**  
Hinged Door  
Lock



**DS2220**  
Sliding Barrier  
Door Lock



# INNOVATORS

OF HARDWARE FOR WINDOWS AND DOORS

---

Cylinders Catalogue v1.1-01.02.2023

## SYDNEY

38 Redfern St,  
Wetherill Park  
Sydney, NSW 2164  
Australia  
Ph: +61 2 9609 2555  
[www.doric.com.au](http://www.doric.com.au)

## AUCKLAND

26/C Triton Drive,  
Albany, North Shore,  
Auckland 0632  
New Zealand  
Ph: +64 9 415 5535  
[www.doric.co.nz](http://www.doric.co.nz)

## KUALA LUMPUR

No.17 Jalan 51/203A,  
Kawasan Perindustrian Tiong Nam,  
Seksyen 51, 46050 Petaling Jaya,  
Selangor, Malaysia  
Ph: +603 777 33 628  
[www.doric.com.my](http://www.doric.com.my)



**ALCHIN  
LONG  
GROUP**



---

# CYLINDERS

HARDWARE  
& ACCESSORIES