



DS2800

LIFT TO LOCK
MORTICE LOCKBODY

Lift to Lock multi-point mortice lock features 4 points of locking for maximum security.

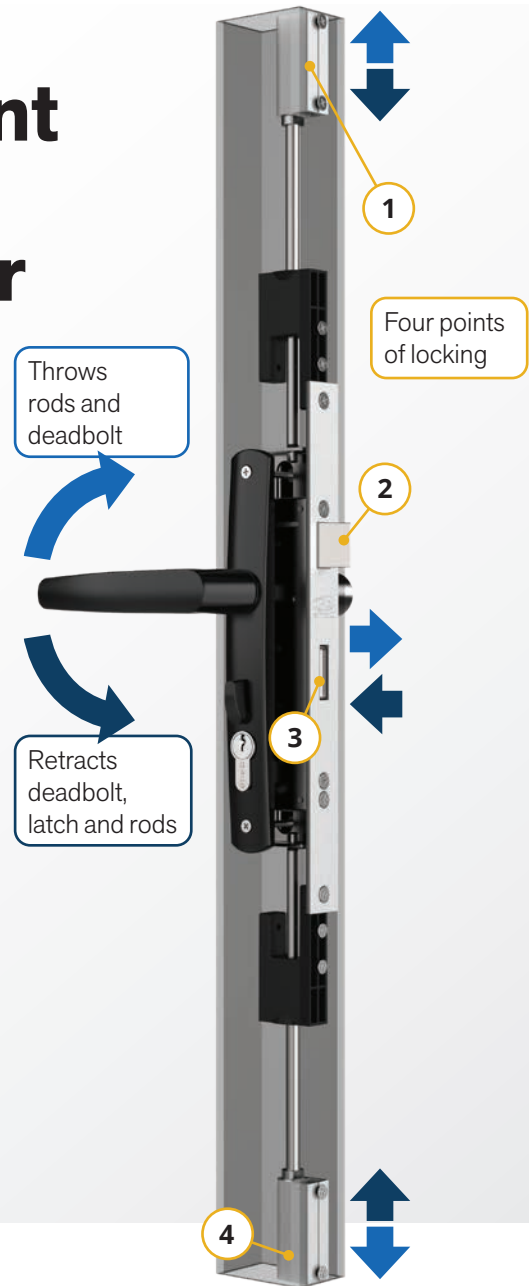
The DS2800 Lift to Lock Mortice Lockbody is Doric's latest hardware innovation following on the market-leading Doric DS1297 lockbody and has been designed specifically for aluminium hinged door applications.

In addition to the latch and projection bolts, the lockbody now includes a vertical shoot locking kit, throwing two additional bolts into the head and sill of a door frame, raising the DS2800 to four-point locking system for greater peace of mind and security.

Like the DS1297, the DS2800 features the popular Lift to Lock mechanism where lifting the handle throws the projection bolt as well as the vertical shoot locking bolts (if installed).

An over-camming mechanism has been introduced to prevent external tampering when the locking bolts have been thrown into a locked position, providing additional peace of mind and another level of protection.

The DS2800 now features a redesigned Mid Guide mounting system that improves ease of installation and removes the need for additional tab mounting components.



ADVANTAGES



MAXIMUM SECURITY

The inclusion of four-point locking allows for multiple points of engagement as well as enhanced security and deadlocking capabilities.



QUICK ACCESSIBILITY

Lift to Lock mechanism can easily engage locking bolts & rods which then can be disengaged and with the turn of a handle.



COMPATIBILITY

Designed with a reversible spring-loaded latch tongue the DS2800 can suit either Left-Hand or Right-Hand hinged doors and can be changed without hassle.



DAY LATCHING

When partnered with Snib Furniture provides the ability to secure the door from the inside without the use of keys for quick access.



SECURE & DURABLE

Introduction of over-camming mechanism is thrown & deadlocked position prevents external tampering for additional security.



INSTALLATION & SERVICEABILITY

Cartridge style significantly improves on-site installation and adds serviceability when maintenance is required. The improved accessory kit offers sophisticated fitment reducing resonance within the door frame.

PRODUCT DETAILS

BACKSET	Available in 30mm & 40mm
SPINDLE TO CYLINDER BARREL PITCH	Industry Standard 85mm
SPINDLE TYPE	8mm square
LATCH PROJECTION	14.5mm
BOLT PROJECTION	18mm
VERTICAL THROW	18mm
MATERIALS	SS304 Face Plate
RECOMMENDED CYLINDERS	Floating Cam Cylinders: DS196NSK – 62mm Euro Cyl. DS200NSK – 70mm Euro Cyl. EPEC - Digital cylinder upgrade



DS2800
LIFT TO LOCK
MORTICE LOCKBODY

TESTING



CYCLIC TEST

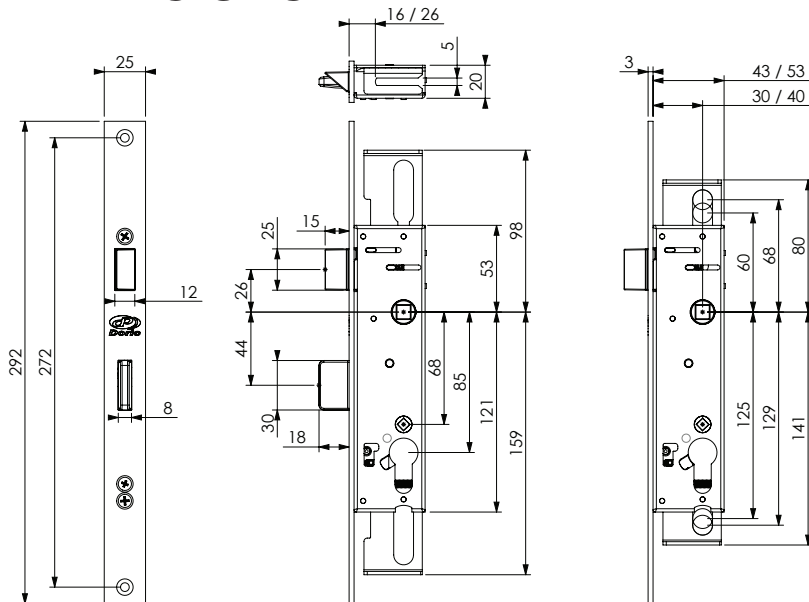
Completed and surpassed functionality test according to:
ICP 002 - Window & Door Hardware. Achieved 100,000 cycles.



MAXIMUM TORQUE TEST

Tested on standard hinged furniture in deadlocked configuration.
Completed and surpassed 76Nm

DIMENSIONS



LOCKING BOLT ENGAGED

LOCKING BOLT DISENGAGED

HOW TO ORDER

CODE	FURNITURE PLATE	LEVER	CYLINDER	KEYING	STRIKE
MDS2800	1500=SS no snib	5=Swan 6=Tumut	DS196NSK	KA	S = 27mm lip
	1504=SS w/snib		DS200NSK	KD	M = 34mm lip
	1600=PC no snib		EPEC	96###	L = 72mm lip
	1604=PC w/snib		-	-	X = no strike

INNOVATORS

OF HARDWARE FOR WINDOWS AND DOORS

DS2800.v1.1-24.01.2023

SYDNEY

38 Redfern St,
Wetherill Park
Sydney, NSW 2164
Australia
Ph: +61 2 9609 2555
www.doric.com.au

AUCKLAND

26/C Triton Drive,
Albany, North Shore,
Auckland 0632
New Zealand
Ph: +64 9 415 5535
www.doric.co.nz

KUALA LUMPUR

No.17 Jalan 51/203A,
Kawasan Perindustrian Tiong Nam,
Seksyen 51, 46050 Petaling Jaya,
Selangor, Malaysia
Ph: +603 777 33 628
www.doric.com.my



DS2800

LIFT TO LOCK
MORTICE LOCKBODY